

Datasheet for ABIN953330

anti-Matrilin 3 antibody (Middle Region)[Go to Product page](#)**1** Image

Overview

Quantity:	0.4 mL
Target:	Matrilin 3 (MATN3)
Binding Specificity:	AA 219-248, Middle Region
Reactivity:	Human
Host:	Rabbit
Clonality:	Polyclonal
Conjugate:	This Matrilin 3 antibody is un-conjugated
Application:	Western Blotting (WB), Enzyme Immunoassay (EIA)

Product Details

Immunogen:	KLH conjugated synthetic peptide between 219-248 amino acids from the Central region of human Matrilin-3 Genename: MATN3
Isotype:	Ig Fraction
Specificity:	This antibody recognizes Human Matrilin-3 (Center).
Purification:	Protein A column, followed by peptide affinity purification

Target Details

Target:	Matrilin 3 (MATN3)
Alternative Name:	Matrilin-3 (MATN3 Products)
Background:	This gene encodes a member of von Willebrand factor A domain containing protein family. This

Target Details

family of proteins is thought to be involved in the formation of filamentous networks in the extracellular matrices of various tissues. This protein contains two von Willebrand factor A domains, it is present in the cartilage extracellular matrix and has a role in the development and homeostasis of cartilage and bone. Mutations in this gene result in multiple epiphyseal dysplasia. Synonyms: MATN3

Molecular Weight: 52817 Da

Gene ID: 4148

NCBI Accession: [NP_002372](#)

Application Details

Application Notes: Optimal working dilution should be determined by the investigator.

Restrictions: For Research Use only

Handling

Format: Liquid

Concentration: 0.25 mg/mL

Buffer: PBS containing 0.09 % (W/V) Sodium Azide as preservative

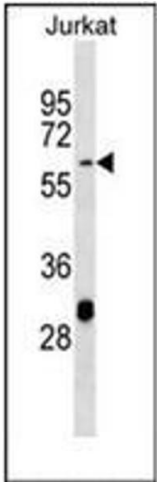
Preservative: Sodium azide

Precaution of Use: This product contains sodium azide: a POISONOUS AND HAZARDOUS SUBSTANCE which should be handled by trained staff only.

Handling Advice: Avoid repeated freezing and thawing.

Storage: 4 °C/-20 °C

Storage Comment: Store undiluted at 2-8 °C for one month or (in aliquots) at -20 °C for longer.



Western Blotting

Image 1. Western blot analysis of Matrilin-3 Antibody (Center) in Jurkat cell line lysates (35ug/lane).