

Datasheet for ABIN953334
anti-MBD3L2 antibody (C-Term)[Go to Product page](#)

1 Image

Overview

Quantity:	0.4 mL
Target:	MBD3L2
Binding Specificity:	AA 183-204, C-Term
Reactivity:	Human
Host:	Rabbit
Clonality:	Polyclonal
Conjugate:	This MBD3L2 antibody is un-conjugated
Application:	Western Blotting (WB), Enzyme Immunoassay (EIA)

Product Details

Immunogen:	KLH conjugated synthetic peptide between 183-204 amino acids from the C-terminal region of human MBD3L2
Isotype:	Ig Fraction
Specificity:	This antibody recognizes Human MBD3L2 (C-term).
Purification:	Protein A column, followed by peptide affinity purification

Target Details

Target:	MBD3L2
Alternative Name:	MBD3L2 (MBD3L2 Products)
Background:	This gene encodes a protein that is related to methyl-CpG-binding proteins but lacks the methyl-

Target Details

CpG binding domain. The protein has been found in germ cell tumors and some somatic tissues. Synonyms: Methyl-CpG-binding domain protein 3-like 2

Molecular Weight: 22695 Da

Gene ID: 100508136

NCBI Accession: [NP_653215](#)

Application Details

Application Notes: Optimal working dilution should be determined by the investigator.

Restrictions: For Research Use only

Handling

Format: Liquid

Concentration: 0.25 mg/mL

Buffer: PBS containing 0.09 % (W/V) Sodium Azide as preservative

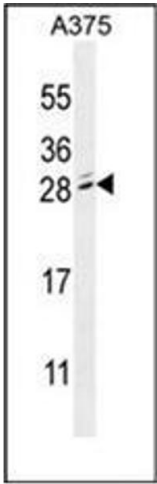
Preservative: Sodium azide

Precaution of Use: This product contains sodium azide: a POISONOUS AND HAZARDOUS SUBSTANCE which should be handled by trained staff only.

Handling Advice: Avoid repeated freezing and thawing.

Storage: 4 °C/-20 °C

Storage Comment: Store undiluted at 2-8 °C for one month or (in aliquots) at -20 °C for longer.



Western Blotting

Image 1. Western blot analysis of MBD3L2 Antibody (C-term) in A375 cell line lysates (35ug/lane). This demonstrates the MBD3L2 antibody detected the MBD3L2 protein (arrow).