



[Go to Product page](#)

Datasheet for ABIN953335

anti-MBD3L3 antibody (C-Term)

4 Images

Overview

Quantity:	0.4 mL
Target:	MBD3L3
Binding Specificity:	AA 163-192, C-Term
Reactivity:	Human
Host:	Rabbit
Clonality:	Polyclonal
Conjugate:	This MBD3L3 antibody is un-conjugated
Application:	Western Blotting (WB), Flow Cytometry (FACS), Immunofluorescence (IF), Immunohistochemistry (Paraffin-embedded Sections) (IHC (p)), Enzyme Immunoassay (EIA)

Product Details

Immunogen:	KLH conjugated synthetic peptide between 163-192 amino acids from the C-terminal region of human MBD3L3
Isotype:	Ig Fraction
Specificity:	This antibody recognizes Human MBD3L3 (C-term).
Purification:	Protein A column, followed by peptide affinity purification

Target Details

Target:	MBD3L3
Alternative Name:	MBD3L3 (MBD3L3 Products)

Target Details

Background:	Synonyms: Putative methyl-CpG-binding domain protein 3-like 3
Molecular Weight:	23095 Da
Gene ID:	653657
NCBI Accession:	NP_001157897

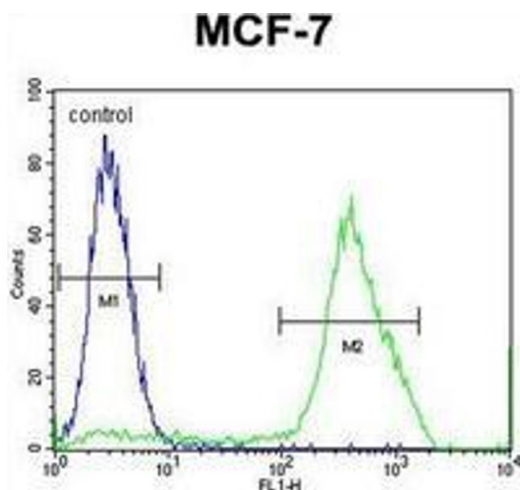
Application Details

Application Notes:	Optimal working dilution should be determined by the investigator.
Restrictions:	For Research Use only

Handling

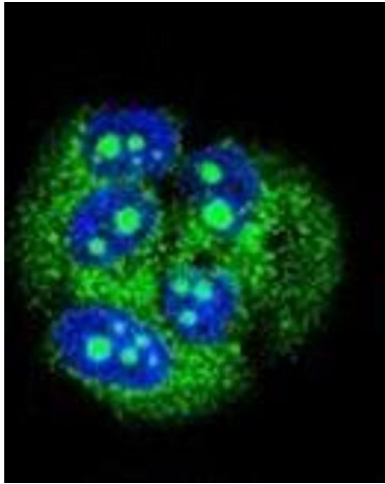
Format:	Liquid
Concentration:	0.25 mg/mL
Buffer:	PBS containing 0.09 % (W/V) Sodium Azide as preservative
Preservative:	Sodium azide
Precaution of Use:	This product contains sodium azide: a POISONOUS AND HAZARDOUS SUBSTANCE which should be handled by trained staff only.
Handling Advice:	Avoid repeated freezing and thawing.
Storage:	4 °C/-20 °C
Storage Comment:	Store undiluted at 2-8 °C for one month or (in aliquots) at -20 °C for longer.

Images



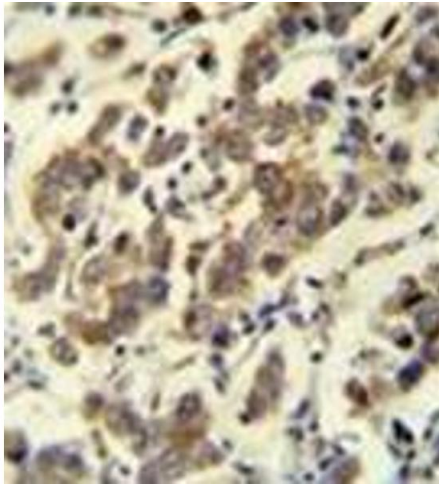
Flow Cytometry

Image 1. Flow cytometric analysis of MCF-7 cells using MBD3L3 Antibody (C-term) Cat.-No AP52620PU-N (right histogram) compared to a negative control cell (left histogram). FITC-conjugated goat-anti-rabbit secondary antibodies were used for the analysis.



Immunofluorescence

Image 2. Confocal immunofluorescent analysis of MBD3L3 Antibody (C-term) Cat.-No AP52620PU-N with MCF-7 cell followed by Alexa Fluor 488-conjugated goat anti-rabbit IgG (green). DAPI was used to stain the cell nuclear (blue).



Immunohistochemistry (Paraffin-embedded Sections)

Image 3. Immunohistochemistry analysis in formalin fixed and paraffin embedded human testis carcinoma reacted with MBD3L3 Antibody (C-term) followed which was peroxidase conjugated to the secondary antibody and followed by DAB staining.

Please check the [product details page](#) for more images. Overall 4 images are available for ABIN953335.