

Datasheet for ABIN953337
anti-MBNL2 antibody (C-Term)

3 Images

[Go to Product page](#)

Overview

| | |
|----------------------|---|
| Quantity: | 0.4 mL |
| Target: | MBNL2 |
| Binding Specificity: | AA 260-290, C-Term |
| Reactivity: | Human |
| Host: | Rabbit |
| Clonality: | Polyclonal |
| Application: | Western Blotting (WB), Flow Cytometry (FACS), Immunohistochemistry (Paraffin-embedded Sections) (IHC (p)), Enzyme Immunoassay (EIA) |

Product Details

| | |
|---------------|--|
| Immunogen: | KLH conjugated synthetic peptide between 260-290 amino acids from the C-terminal region of human MBNL2 |
| Isotype: | Ig Fraction |
| Specificity: | This antibody recognizes Human MBNL2 (C-term). |
| Purification: | Protein A column, followed by peptide affinity purification |

Target Details

| | |
|-------------------|--|
| Target: | MBNL2 |
| Alternative Name: | MBNL2 (MBNL2 Products) |
| Background: | This gene encodes a C3H-type zinc finger protein, which is similar to the Drosophila melanogaster muscleblind B protein. Drosophila muscleblind is a gene required for |

Target Details

photoreceptor differentiation. Several alternatively spliced transcript variants have been described but the full-length natures of only some have been determined. Synonyms: MBLL, MBLL39, MLP1, Muscleblind-like protein 1, Muscleblind-like protein 2, Muscleblind-like protein-like, Muscleblind-like protein-like 39

Molecular Weight: 40518 Da

Gene ID: 10150

NCBI Accession: [NP_659002](#)

Application Details

Application Notes: Optimal working dilution should be determined by the investigator.

Restrictions: For Research Use only

Handling

Format: Liquid

Concentration: 0.25 mg/mL

Buffer: PBS containing 0.09 % (W/V) Sodium Azide as preservative

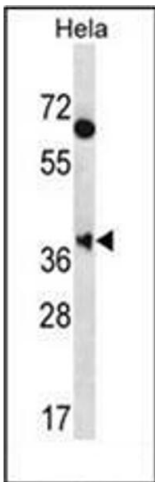
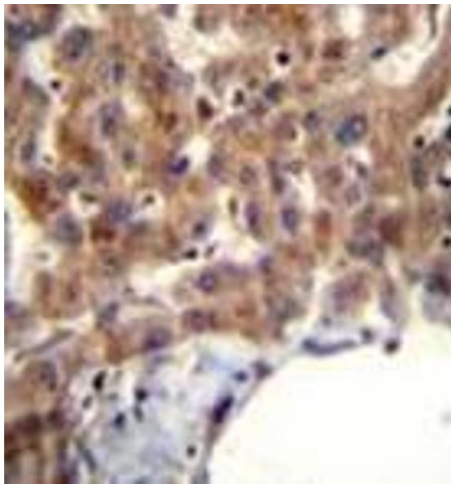
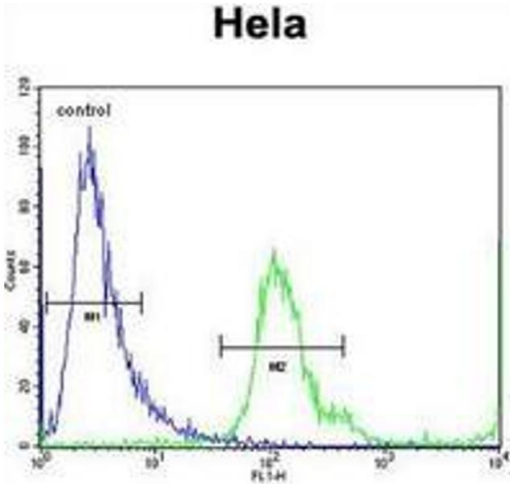
Preservative: Sodium azide

Precaution of Use: This product contains sodium azide: a POISONOUS AND HAZARDOUS SUBSTANCE which should be handled by trained staff only.

Handling Advice: Avoid repeated freezing and thawing.

Storage: 4 °C/-20 °C

Storage Comment: Store undiluted at 2-8 °C for one month or (in aliquots) at -20 °C for longer.



Flow Cytometry

Image 1. Flow cytometric analysis of HeLa cells using MBNL2 Antibody (C-term) Cat.-No AP52623PU-N (right histogram) compared to a negative control cell (left histogram). FITC-conjugated goat-anti-rabbit secondary antibodies were used for the analysis.

Immunohistochemistry (Paraffin-embedded Sections)

Image 2. Immunohistochemistry analysis in formalin fixed and paraffin embedded human liver tissue reacted with MBNL2 Antibody (C-term) followed which was peroxidase conjugated to the secondary antibody and followed by AB staining.

Western Blotting

Image 3. Western blot analysis of MBNL2 Antibody (C-term) in HeLa cell line lysates (35ug/lane). This demonstrates the MBNL2 antibody detected the MBNL2 protein (arrow).