

Datasheet for ABIN953338

anti-MBNL3 antibody (Middle Region)[Go to Product page](#)**1** Image

Overview

Quantity:	0.4 mL
Target:	MBNL3
Binding Specificity:	AA 250-280, Middle Region
Reactivity:	Human
Host:	Rabbit
Clonality:	Polyclonal
Conjugate:	This MBNL3 antibody is un-conjugated
Application:	Western Blotting (WB), Enzyme Immunoassay (EIA)

Product Details

Immunogen:	conjugated synthetic peptide between 250-280 amino acids from the Central region of human MBNL3
Isotype:	Ig Fraction
Specificity:	This antibody recognizes Human MBNL3 (Center).
Purification:	Protein A column, followed by peptide affinity purification

Target Details

Target:	MBNL3
Alternative Name:	MBNL3 (MBNL3 Products)
Background:	This gene encodes a member of the muscleblind-like family of proteins. The encoded protein

Target Details

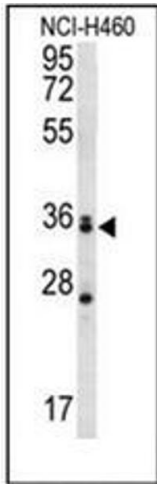
	may function in regulation of alternative splicing and may play a role in the pathophysiology of myotonic dystrophy. Alternatively spliced transcript variants have been described.Synonyms: CHCR, Cys3His CCG1-required protein, HCHCR, MBLX39, MBXL, Muscleblind-like X-linked protein, Muscleblind-like protein 3
Molecular Weight:	38532 Da
Gene ID:	55796
NCBI Accession:	NP_001164172
Pathways:	Regulation of Muscle Cell Differentiation, Skeletal Muscle Fiber Development

Application Details

Application Notes:	Optimal working dilution should be determined by the investigator.
Restrictions:	For Research Use only

Handling

Format:	Liquid
Concentration:	0.25 mg/mL
Buffer:	PBS containing 0.09 % (W/V) Sodium Azide as preservative
Preservative:	Sodium azide
Precaution of Use:	This product contains sodium azide: a POISONOUS AND HAZARDOUS SUBSTANCE which should be handled by trained staff only.
Handling Advice:	Avoid repeated freezing and thawing.
Storage:	4 °C/-20 °C
Storage Comment:	Store undiluted at 2-8 °C for one month or (in aliquots) at -20 °C for longer.



Western Blotting

Image 1. Western blot analysis of MBNL3 Antibody (Center) in NCI-H460 cell line lysates (35ug/lane). This demonstrates the MBNL3 antibody detected the MBNL3 protein (arrow).