

Datasheet for ABIN953341
anti-MBTD1 antibody (C-Term)

3 Images

[Go to Product page](#)

Overview

Quantity:	0.4 mL
Target:	MBTD1
Binding Specificity:	AA 571-600, C-Term
Reactivity:	Human, Mouse
Host:	Rabbit
Clonality:	Polyclonal
Conjugate:	This MBTD1 antibody is un-conjugated
Application:	Western Blotting (WB), Immunohistochemistry (Paraffin-embedded Sections) (IHC (p)), Enzyme Immunoassay (EIA)

Product Details

Immunogen:	KLH conjugated synthetic peptide between 571-600 amino acids from the C-terminal region of human MBTD1
Isotype:	Ig Fraction
Specificity:	This antibody recognizes Human and Mouse MBTD1 (C-term).
Purification:	Protein A column, followed by peptide affinity purification

Target Details

Target:	MBTD1
Alternative Name:	MBTD1 (MBTD1 Products)

Target Details

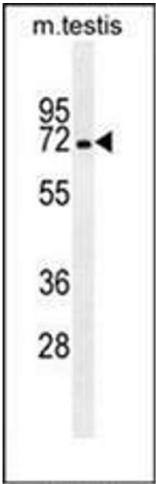
Background:	Putative Polycomb group (PcG) protein. PcG proteins maintain the transcriptionally repressive state of genes, probably via a modification of chromatin, rendering it heritably changed in its expressibility (By similarity). Specifically binds to monomethylated and dimethylated 'Lys-20' on histone H4.Synonyms: MBT domain-containing protein 1
Molecular Weight:	70547 Da
Gene ID:	54799
NCBI Accession:	NP_060113

Application Details

Application Notes:	Optimal working dilution should be determined by the investigator.
Restrictions:	For Research Use only

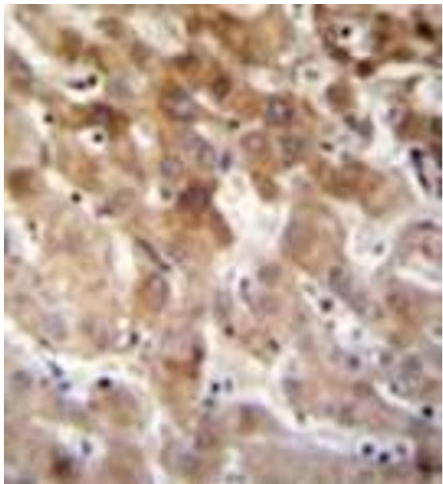
Handling

Format:	Liquid
Concentration:	0.25 mg/mL
Buffer:	PBS containing 0.09 % (W/V) Sodium Azide as preservative
Preservative:	Sodium azide
Precaution of Use:	This product contains sodium azide: a POISONOUS AND HAZARDOUS SUBSTANCE which should be handled by trained staff only.
Handling Advice:	Avoid repeated freezing and thawing.
Storage:	4 °C/-20 °C
Storage Comment:	Store undiluted at 2-8 °C for one month or (in aliquots) at -20 °C for longer.



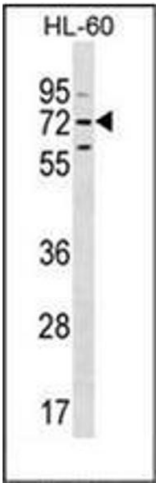
Western Blotting

Image 1. Western blot analysis of MBTD1 Antibody (C-term) in mouse testis tissue lysates (35ug/lane). This demonstrates the MBTD1 antibody detected the MBTD1 protein (arrow).



Immunohistochemistry (Paraffin-embedded Sections)

Image 2. Immunohistochemistry analysis in formalin fixed and paraffin embedded human liver tissue reacted with MBTD1 Antibody (C-term) followed by peroxidase conjugated to the secondary antibody and followed by DAB staining.



Western Blotting

Image 3. Western blot analysis of MBTD1 Antibody (C-term) in HL-60 cell line lysates (35ug/lane). This demonstrates the MBTD1 antibody detected the MBTD1 protein (arrow).