

Datasheet for ABIN953344

anti-ATF7IP2 antibody (Middle Region)**4** Images[Go to Product page](#)

Overview

Quantity:	0.4 mL
Target:	ATF7IP2
Binding Specificity:	AA 325-355, Middle Region
Reactivity:	Human, Mouse
Host:	Rabbit
Clonality:	Polyclonal
Conjugate:	This ATF7IP2 antibody is un-conjugated
Application:	Western Blotting (WB), Flow Cytometry (FACS), Immunohistochemistry (Paraffin-embedded Sections) (IHC (p)), Enzyme Immunoassay (EIA)

Product Details

Immunogen:	KLH conjugated synthetic peptide between 325-355 amino acids from the Central region of human MCAF2
Isotype:	Ig Fraction
Specificity:	This antibody recognizes Human and Mouse MCAF2 (Center).
Purification:	Protein A column, followed by peptide affinity purification

Target Details

Target:	ATF7IP2
Alternative Name:	MCAF2 (ATF7IP2 Products)

Target Details

Background: Recruiter that couples transcriptional factors to general transcription apparatus and thereby modulates transcription regulation and chromatin formation. Can both act as an activator or a repressor depending on the context. Mediates MBD1-dependent transcriptional repression, probably by recruiting complexes containing SETDB1. The complex formed with MBD1 and SETDB1 represses transcription and probably couples DNA methylation and histone 'Lys-9' trimethylation activity (Probable).Synonyms: ATF7IP2, Activating transcription factor 7-interacting protein 2

Molecular Weight: 75764 Da

Gene ID: 80063

NCBI Accession: [NP_079273](#)

Application Details

Application Notes: Optimal working dilution should be determined by the investigator.

Restrictions: For Research Use only

Handling

Format: Liquid

Concentration: 0.25 mg/mL

Buffer: PBS containing 0.09 % (W/V) Sodium Azide as preservative

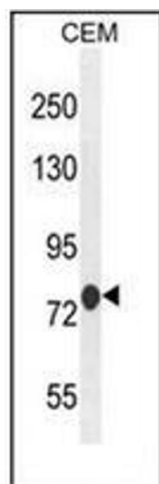
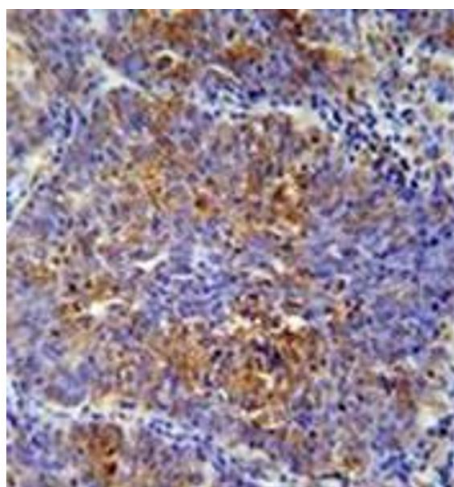
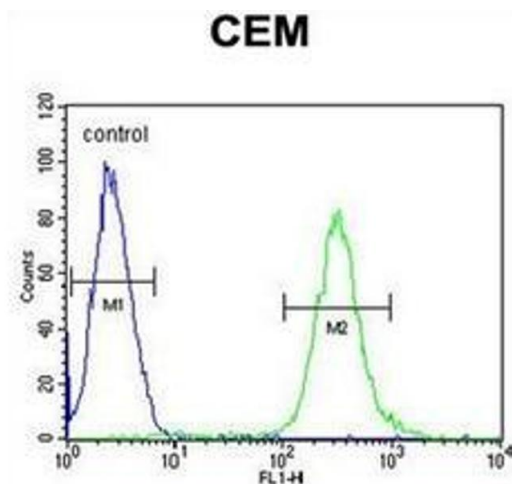
Preservative: Sodium azide

Precaution of Use: This product contains sodium azide: a POISONOUS AND HAZARDOUS SUBSTANCE which should be handled by trained staff only.

Handling Advice: Avoid repeated freezing and thawing.

Storage: 4 °C/-20 °C

Storage Comment: Store undiluted at 2-8 °C for one month or (in aliquots) at -20 °C for longer.



Flow Cytometry

Image 1. Flow cytometric analysis of CEM cells using MCAF2 Antibody (Center) Cat.-No AP52629PU-N (right histogram) compared to a negative control cell (left histogram). FITC-conjugated goat-anti-rabbit secondary antibodies were used for the analysis.

Immunohistochemistry (Paraffin-embedded Sections)

Image 2. Immunohistochemistry analysis in formalin fixed and paraffin embedded human lung carcinoma reacted with MCAF2 Antibody (Center) Cat.-No AP52629PU-N peroxidase conjugated to the secondary antibody and followed by DAB staining. This data demonstrates the use of the MCAF2 Antibody (Center) for immunohistochemistry. Clinical relevance has not been evaluated.

Western Blotting

Image 3. Western blot analysis of AP52629PU-N in CEM cell line lysates (35ug/lane). This demonstrates the MCAF2 antibody detected the MCAF2 protein (arrow).

Please check the [product details page](#) for more images. Overall 4 images are available for ABIN953344.