

Datasheet for ABIN953346
anti-MCART2 antibody (N-Term)[Go to Product page](#)

2 Images

Overview

Quantity:	0.4 mL
Target:	MCART2 (SLC25A52)
Binding Specificity:	AA 49-79, N-Term
Reactivity:	Human
Host:	Rabbit
Clonality:	Polyclonal
Conjugate:	This MCART2 antibody is un-conjugated
Application:	Western Blotting (WB), Flow Cytometry (FACS), Enzyme Immunoassay (EIA)

Product Details

Immunogen:	conjugated synthetic peptide between 49-79 amino acids from the N-terminal region of human MCART2
Isotype:	Ig Fraction
Specificity:	This antibody recognizes Human MCART2 (N-term).
Purification:	Protein A column, followed by peptide affinity purification

Target Details

Target:	MCART2 (SLC25A52)
Alternative Name:	MCART2 (SLC25A52 Products)
Background:	This gene is similar to the mitochondrial carrier triple repeat 1 gene on chromosome 9. The

Target Details

gene is intronless and may be an evolving pseudogene, however, it is transcribed and it contains a full-length coding region so it is currently classified as a protein-coding locus. Synonyms: Mitochondrial carrier triple repeat protein 2

Molecular Weight: 33721 Da

Gene ID: 147407

NCBI Accession: [NP_001029344](#)

Application Details

Application Notes: Optimal working dilution should be determined by the investigator.

Restrictions: For Research Use only

Handling

Format: Liquid

Concentration: 0.25 mg/mL

Buffer: PBS containing 0.09 % (W/V) Sodium Azide as preservative

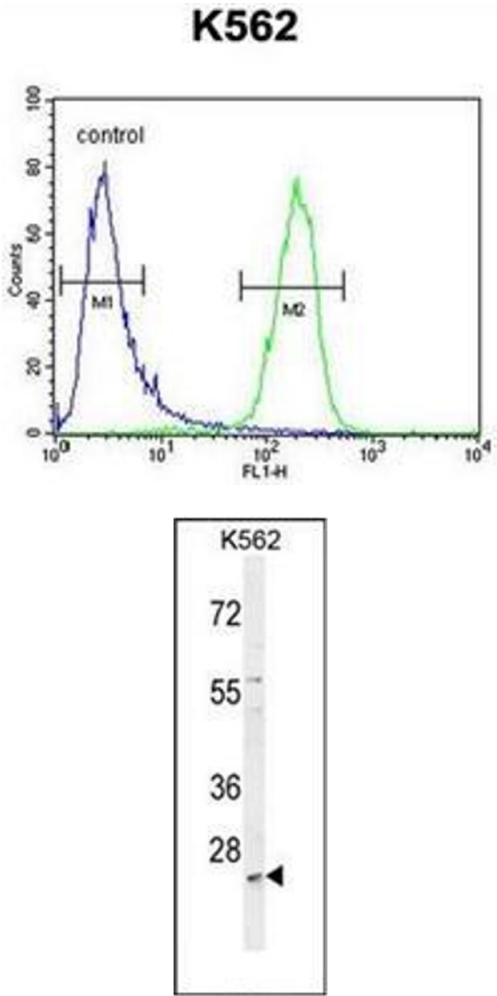
Preservative: Sodium azide

Precaution of Use: This product contains sodium azide: a POISONOUS AND HAZARDOUS SUBSTANCE which should be handled by trained staff only.

Handling Advice: Avoid repeated freezing and thawing.

Storage: 4 °C/-20 °C

Storage Comment: Store undiluted at 2-8 °C for one month or (in aliquots) at -20 °C for longer.



Flow Cytometry

Image 1. Flow cytometric analysis of K562 cells using MCART2 Antibody (N-term) Cat.-No AP52631PU-N (right histogram) compared to a negative control cell (left histogram).FITC-conjugated goat-anti-rabbit secondary antibodies were used for the analysis.

Western Blotting

Image 2. Western blot analysis of MCART2 Antibody (N-term) in K562 cell line lysates (35ug/lane). This demonstrates the MCART2 antibody detected the MCART2 protein (arrow).