

Datasheet for ABIN953348
anti-MCEE antibody (C-Term)[Go to Product page](#)

2 Images

Overview

Quantity:	0.4 mL
Target:	MCEE
Binding Specificity:	AA 135-164, C-Term
Reactivity:	Human, Mouse
Host:	Rabbit
Clonality:	Polyclonal
Conjugate:	This MCEE antibody is un-conjugated
Application:	Western Blotting (WB), Immunohistochemistry (Paraffin-embedded Sections) (IHC (p)), Enzyme Immunoassay (EIA)

Product Details

Immunogen:	KLH conjugated synthetic peptide between 135-164 amino acids from the C-terminal region of Human MCEE Genename: MCHR1
Isotype:	Ig Fraction
Specificity:	This antibody recognizes Human and Mouse MCEE (C-term).
Purification:	Protein A column, followed by peptide affinity purification

Target Details

Target:	MCEE
Alternative Name:	MCEE (MCEE Products)

Target Details

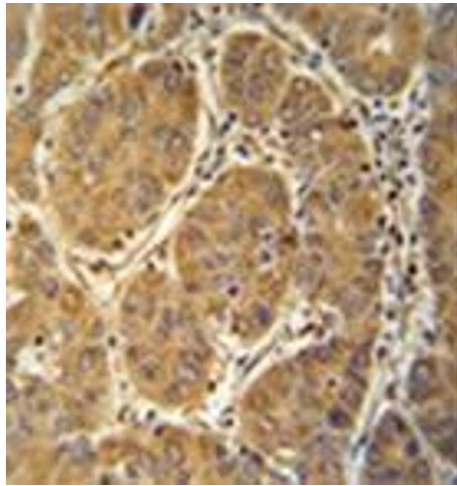
Background:	Synonyms: DL-methylmalonyl-CoA racemase, mitochondrial Methylmalonyl-CoA epimerase
Molecular Weight:	18749 Da
Gene ID:	84693
NCBI Accession:	NP_115990
Pathways:	Monocarboxylic Acid Catabolic Process

Application Details

Application Notes:	Optimal working dilution should be determined by the investigator.
Restrictions:	For Research Use only

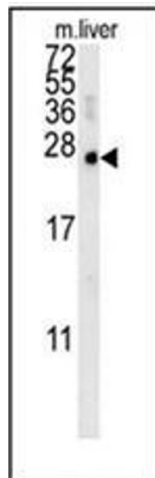
Handling

Format:	Liquid
Concentration:	0.25 mg/mL
Buffer:	PBS containing 0.09 % (W/V) Sodium Azide as preservative
Preservative:	Sodium azide
Precaution of Use:	This product contains sodium azide: a POISONOUS AND HAZARDOUS SUBSTANCE which should be handled by trained staff only.
Handling Advice:	Avoid repeated freezing and thawing.
Storage:	4 °C/-20 °C
Storage Comment:	Store undiluted at 2-8 °C for one month or (in aliquots) at -20 °C for longer.



Immunohistochemistry (Paraffin-embedded Sections)

Image 1. Immunohistochemistry analysis in formalin fixed and paraffin embedded human hepatocarcinoma reacted with MCEE Antibody (C-term) followed which peroxidase conjugated to the secondary antibody and followed by DAB staining.



Western Blotting

Image 2. Western blot analysis of MCEE Antibody (C-term) in mouse liver tissue lysates (15ug/lane). This demonstrates the MCEE antibody detected MCEE protein (arrow).