

Datasheet for ABIN953349
anti-MCF2 antibody (C-Term)[Go to Product page](#)

3 Images

Overview

Quantity:	0.4 mL
Target:	MCF2
Binding Specificity:	AA 803-833, C-Term
Reactivity:	Human
Host:	Rabbit
Clonality:	Polyclonal
Conjugate:	This MCF2 antibody is un-conjugated
Application:	Western Blotting (WB), Flow Cytometry (FACS), Immunohistochemistry (Paraffin-embedded Sections) (IHC (p)), Enzyme Immunoassay (EIA)

Product Details

Immunogen:	KLH conjugated synthetic peptide between 803-833 amino acids from the C-terminal region of Human MCF2
Isotype:	Ig Fraction
Specificity:	This antibody recognizes Human MCF2 (C-term).
Purification:	Protein A column, followed by peptide affinity purification

Target Details

Target:	MCF2
Alternative Name:	MCF2 (MCF2 Products)

Target Details

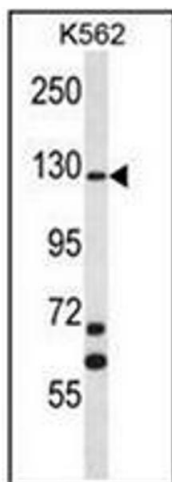
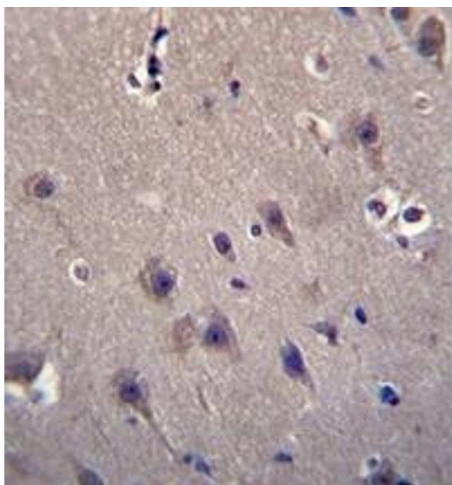
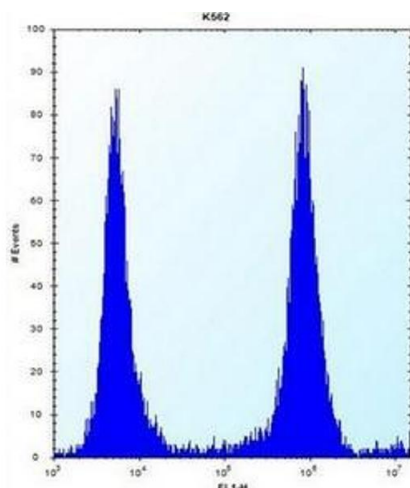
Background:	The oncogenic protein encoded by this gene is a guanine nucleotide exchange factor (GEF) that exerts control over some members of the Rho family of small GTPases. Several transcript variants encoding different isoforms have been found for this gene. These isoforms exhibit different expression patterns and varying levels of GEF activity.Synonyms: DBL, Proto-oncogene DBL
Molecular Weight:	107673 Da
Gene ID:	4168
NCBI Accession:	NP_001093325

Application Details

Application Notes:	Optimal working dilution should be determined by the investigator.
Restrictions:	For Research Use only

Handling

Format:	Liquid
Concentration:	0.25 mg/mL
Buffer:	PBS containing 0.09 % (W/V) Sodium Azide as preservative
Preservative:	Sodium azide
Precaution of Use:	This product contains sodium azide: a POISONOUS AND HAZARDOUS SUBSTANCE which should be handled by trained staff only.
Handling Advice:	Avoid repeated freezing and thawing.
Storage:	4 °C/-20 °C
Storage Comment:	Store undiluted at 2-8 °C for one month or (in aliquots) at -20 °C for longer.



Flow Cytometry

Image 1. Flow cytometric analysis of K562 cells using MCF2 Antibody (C-term) Cat.-No AP52634PU-N (right histogram) compared to a negative control cell (left histogram). FITC-conjugated donkey-anti-rabbit secondary antibodies were used for the analysis.

Immunohistochemistry (Paraffin-embedded Sections)

Image 2. Immunohistochemistry analysis in formalin fixed and paraffin embedded human brain tissue reacted with MCF2 Antibody (C-term) followed which was peroxidase conjugated to the secondary antibody and followed by DAB staining.

Western Blotting

Image 3. Western blot analysis of MCF2 Antibody (C-term) Cat.-No AP52634PU-N in K562 cell line lysates (35ug/lane). This demonstrates the MCF2 antibody detected the MCF2 protein (arrow).