

Datasheet for ABIN953350
anti-MCHR1 antibody (C-Term)

3 Images

[Go to Product page](#)

Overview

Quantity:	0.4 mL
Target:	MCHR1
Binding Specificity:	AA 399-426, C-Term
Reactivity:	Human
Host:	Rabbit
Clonality:	Polyclonal
Conjugate:	This MCHR1 antibody is un-conjugated
Application:	Western Blotting (WB), Flow Cytometry (FACS), Immunohistochemistry (Paraffin-embedded Sections) (IHC (p)), Enzyme Immunoassay (EIA)

Product Details

Immunogen:	KLH conjugated synthetic peptide between 399-426 amino acids from the C-terminal region of Human MCHR1 / GPR24
Isotype:	Ig Fraction
Specificity:	This antibody recognizes Human MCHR1 / GPR24 (C-term).
Purification:	Protein A column, followed by peptide affinity purification

Target Details

Target:	MCHR1
Alternative Name:	MCHR1 / GPR24 (MCHR1 Products)

Target Details

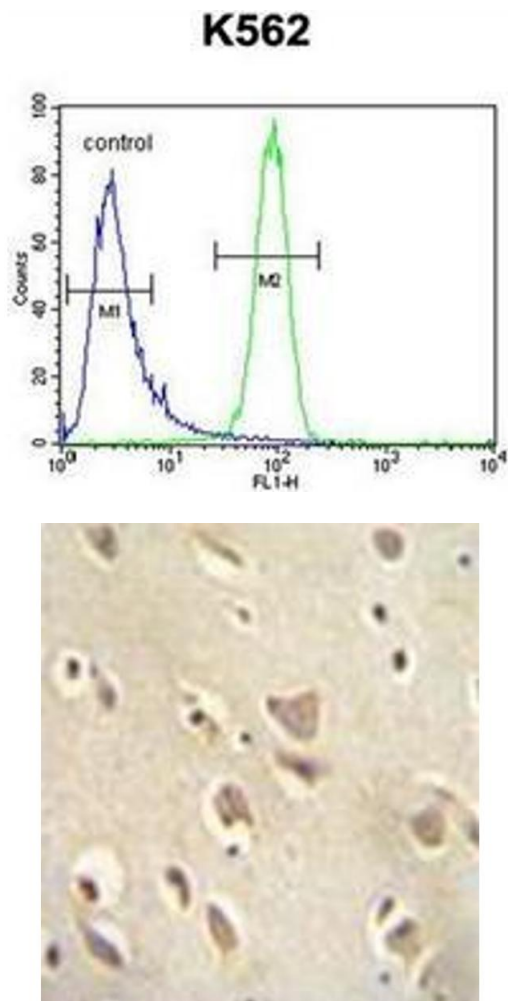
Background:	The protein encoded by this gene, a member of the G protein-coupled receptor family 1, is an integral plasma membrane protein which binds melanin-concentrating hormone. The encoded protein can inhibit cAMP accumulation and stimulate intracellular calcium flux, and is probably involved in the neuronal regulation of food consumption. Although structurally similar to somatostatin receptors, this protein does not seem to bind somatostatin.Synonyms: G-protein coupled receptor 24, MCH receptor 1, MCH-R1, MCHR-1, Melanin-concentrating hormone receptor 1, SLC1, Somatostatin receptor-like protein
Molecular Weight:	45963 Da
Gene ID:	2847
NCBI Accession:	NP_005288
Pathways:	Feeding Behaviour

Application Details

Application Notes:	Optimal working dilution should be determined by the investigator.
Restrictions:	For Research Use only

Handling

Format:	Liquid
Concentration:	0.25 mg/mL
Buffer:	PBS containing 0.09 % (W/V) Sodium Azide as preservative
Preservative:	Sodium azide
Precaution of Use:	This product contains sodium azide: a POISONOUS AND HAZARDOUS SUBSTANCE which should be handled by trained staff only.
Handling Advice:	Avoid repeated freezing and thawing.
Storage:	4 °C/-20 °C
Storage Comment:	Store undiluted at 2-8 °C for one month or (in aliquots) at -20 °C for longer.

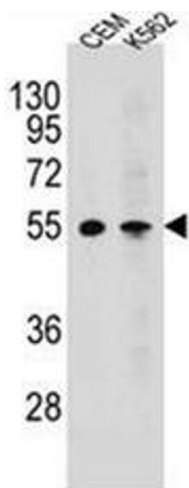


Flow Cytometry

Image 1. Flow cytometric analysis of K562 cells using MCHR1 / GPR24 Antibody (C-term) Cat.-No AP52635PU-N (right histogram) compared to a negative control cell (left histogram). FITC-conjugated goat-anti-rabbit secondary antibodies were used for the analysis.

Immunohistochemistry (Paraffin-embedded Sections)

Image 2. Immunohistochemistry analysis in formalin fixed and paraffin embedded human brain tissue reacted with MCHR1 / GPR24 Antibody (C-term) followed which was peroxidase conjugated to the secondary antibody and followed by DAB staining.



Western Blotting

Image 3. Western blot analysis of MCHR1 / GPR24 Antibody (C-term) in CEM,K562 cell line lysates (35ug/lane). This demonstrates the MCHR1 antibody detected the MCHR1 protein (arrow).