

Datasheet for ABIN953355
anti-MCM6 antibody (N-Term)



[Go to Product page](#)

2 Images

Overview

Quantity:	0.4 mL
Target:	MCM6
Binding Specificity:	AA 79-109, N-Term
Reactivity:	Human
Host:	Rabbit
Clonality:	Polyclonal
Conjugate:	This MCM6 antibody is un-conjugated
Application:	Western Blotting (WB), Immunohistochemistry (Paraffin-embedded Sections) (IHC (p)), Enzyme Immunoassay (EIA)

Product Details

Immunogen:	KLH conjugated synthetic peptide between 79-109 amino acids from the N-terminal region of human MCM6
Isotype:	Ig Fraction
Specificity:	This antibody recognizes Human MCM6 (N-term). Other species not tested.
Purification:	Protein A column, followed by peptide affinity purification

Target Details

Target:	MCM6
Alternative Name:	MCM6 (MCM6 Products)

Target Details

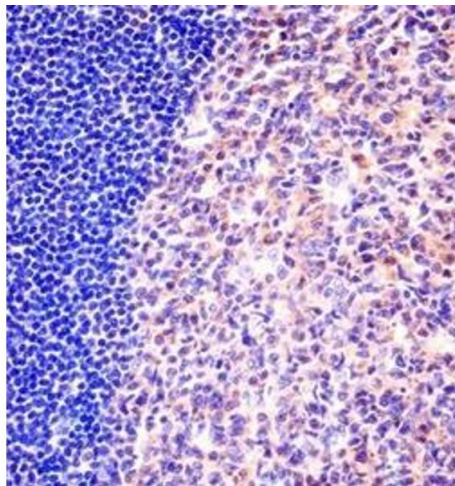
Background:	The protein encoded by this gene is one of the highly conserved mini-chromosome maintenance proteins (MCM) that are essential for the initiation of eukaryotic genome replication. The hexameric protein complex formed by the MCM proteins is a key component of the pre-replication complex (pre_RC) and may be involved in the formation of replication forks and in the recruitment of other DNA replication related proteins. The MCM complex consisting of this protein and MCM2, 4 and 7 proteins possesses DNA helicase activity, and may act as a DNA unwinding enzyme. The phosphorylation of the complex by CDC2 kinase reduces the helicase activity, suggesting a role in the regulation of DNA replication.Synonyms: DNA replication licensing factor MCM6, Mis5, P105MCM, minichromosome maintenance complex component 6
Molecular Weight:	92889 Da
Gene ID:	4175
NCBI Accession:	NP_005906
Pathways:	DNA Damage Repair , Mitotic G1-G1/S Phases , DNA Replication , Synthesis of DNA

Application Details

Application Notes:	Optimal working dilution should be determined by the investigator.
Restrictions:	For Research Use only

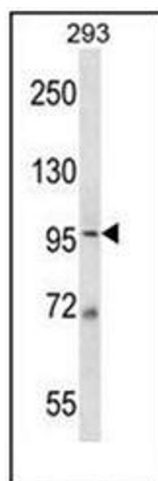
Handling

Format:	Liquid
Concentration:	0.25 mg/mL
Buffer:	PBS containing 0.09 % (W/V) Sodium Azide as preservative
Preservative:	Sodium azide
Precaution of Use:	This product contains sodium azide: a POISONOUS AND HAZARDOUS SUBSTANCE which should be handled by trained staff only.
Handling Advice:	Avoid repeated freezing and thawing.
Storage:	4 °C/-20 °C
Storage Comment:	Store undiluted at 2-8 °C for one month or (in aliquots) at -20 °C for longer.



Immunohistochemistry (Paraffin-embedded Sections)

Image 1. Immunohistochemistry analysis in formalin fixed and paraffin embedded human tonsil tissue reacted with MCM6 Antibody (N-term) followed which was peroxidase conjugated to the secondary antibody and followed by DAB staining.



Western Blotting

Image 2. Western blot analysis of MCM6 Antibody (N-term) in 293 cell line lysates (35ug/lane). This demonstrates the MCM6 antibody detected the MCM6 protein (arrow).