

Datasheet for ABIN953359

anti-MDH2 antibody**3** Images[Go to Product page](#)

Overview

Quantity:	50 µg
Target:	MDH2
Reactivity:	Human
Host:	Mouse
Clonality:	Monoclonal
Conjugate:	This MDH2 antibody is un-conjugated
Application:	Western Blotting (WB), Immunohistochemistry (Paraffin-embedded Sections) (IHC (p)), Enzyme Immunoassay (EIA)

Product Details

Immunogen:	Recombinant protein.
Clone:	1G12
Isotype:	IgG2a
Specificity:	This antibody recognizes MDH2
Cross-Reactivity (Details):	Species reactivity (tested):Human.
Purification:	Protein A Chromatography

Target Details

Target:	MDH2
Alternative Name:	MDH2 (MDH2 Products)

Target Details

Background:	MDH2 is one of the two malate dehydrogenases. Malate dehydrogenase catalyzes the reversible oxidation of malate to oxaloacetate, utilizing the NAD/NADH cofactor system in the citric acid cycle. In particular, MDH2 is localized to the mitochondria and may play pivotal roles in the malate-aspartate shuttle that operates in the metabolic coordination between cytosol and mitochondria. It is widely expressed with high expression levels found in adrenal, small intestine, heart and pancreas. Synonyms: Malate dehydrogenase, mitochondrial
Gene ID:	4191
NCBI Accession:	NP_005909
UniProt:	P40926

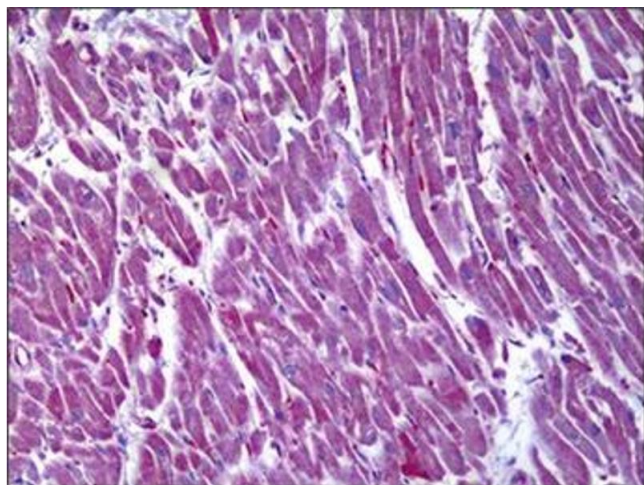
Application Details

Application Notes:	Optimal working dilution should be determined by the investigator.
Restrictions:	For Research Use only

Handling

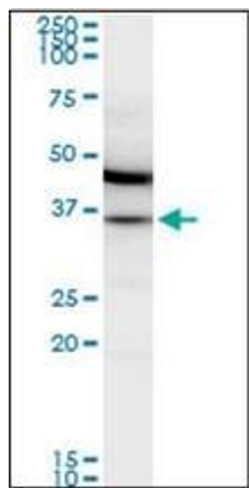
Buffer:	PBS, pH 7.2
Handling Advice:	Avoid repeated freezing and thawing.
Storage:	4 °C/-20 °C
Storage Comment:	Store the antibody undiluted at 2-8 °C for one month or (in aliquots) at -20 °C for longer.

Images



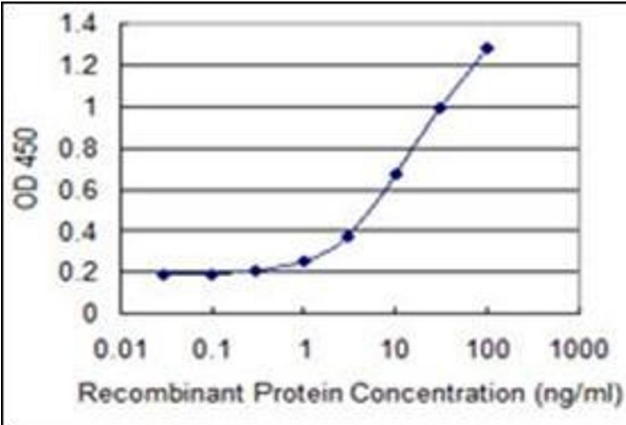
Immunohistochemistry

Image 1.



Western Blotting

Image 2.



ELISA

Image 3.