

Datasheet for ABIN953360  
**anti-MDH1 antibody (AA 101-193)**



[Go to Product page](#)

2 Images

## Overview

Quantity:	50 µg
Target:	MDH1
Binding Specificity:	AA 101-193
Reactivity:	Human
Host:	Mouse
Clonality:	Monoclonal
Conjugate:	This MDH1 antibody is un-conjugated
Application:	Western Blotting (WB), Enzyme Immunoassay (EIA), Immunohistochemistry (Paraffin-embedded Sections) (IHC (p))

## Product Details

Immunogen:	Recombinant protein encoding amino acids 101 to 193 of Human MDH1.
Clone:	1D2
Isotype:	IgG2a
Specificity:	This antibody recognizes MDH1
Purification:	Protein A Chromatography

## Target Details

Target:	MDH1
Alternative Name:	MDHA ( <a href="#">MDH1 Products</a> )

## Target Details

**Background:** Malate dehydrogenase catalyzes the reversible oxidation of malate to oxaloacetate, utilizing the NAD/NADH cofactor system in the citric acid cycle. Malate dehydrogenase 1 (MDH1) is localized to the cytoplasm and may play pivotal roles in the malate-aspartate shuttle that operates in the metabolic coordination between cytosol and mitochondria. Synonyms: MDH1, Malate dehydrogenase, cytoplasmic

**Gene ID:** 4190

**NCBI Accession:** [NP\\_001186040](#)

**UniProt:** [P40925](#)

## Application Details

**Application Notes:** Optimal working dilution should be determined by the investigator.

**Restrictions:** For Research Use only

## Handling

**Concentration:** 0.45 mg/mL

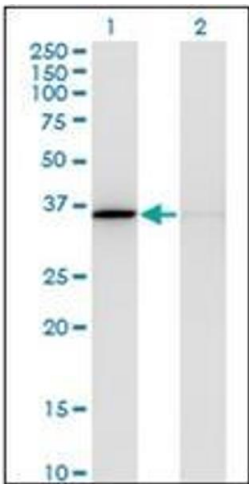
**Buffer:** PBS, pH 7.2

**Handling Advice:** Avoid repeated freezing and thawing.

**Storage:** 4 °C/-20 °C

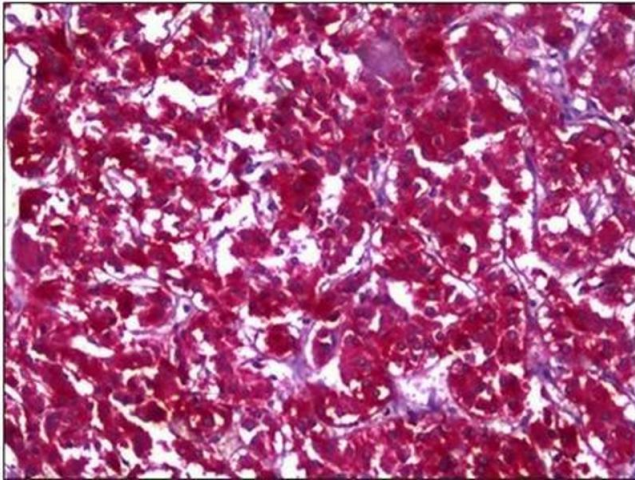
**Storage Comment:** Store the antibody undiluted at 2-8 °C for one month or (in aliquots) at -20 °C for longer.

## Images



### Western Blotting

Image 1.



#### Immunohistochemistry

**Image 2.**