

Datasheet for ABIN953369

**anti-MED16 antibody (Middle Region)**[Go to Product page](#)**1** Image

## Overview

Quantity:	0.4 mL
Target:	MED16
Binding Specificity:	AA 252-281, Middle Region
Reactivity:	Human
Host:	Rabbit
Clonality:	Polyclonal
Conjugate:	This MED16 antibody is un-conjugated
Application:	Western Blotting (WB), Enzyme Immunoassay (EIA)

## Product Details

Immunogen:	KLH conjugated synthetic peptide between 252-281 amino acids from the Central region of human MED16
Isotype:	Ig Fraction
Specificity:	This antibody recognizes Human MED16 (Center).
Purification:	Protein A column, followed by peptide affinity purification

## Target Details

Target:	MED16
Alternative Name:	MED16 ( <a href="#">MED16 Products</a> )
Background:	Component of the Mediator complex, a coactivator involved in the regulated transcription of

## Target Details

nearly all RNA polymerase II-dependent genes. Mediator functions as a bridge to convey information from gene-specific regulatory proteins to the basal RNA polymerase II transcription machinery. Mediator is recruited to promoters by direct interactions with regulatory proteins and serves as a scaffold for the assembly of a functional preinitiation complex with RNA polymerase II and the general transcription factors. Synonyms: DRIP92, Mediator complex subunit 16, Mediator of RNA polymerase II transcription subunit 16, THRAP5, Thyroid hormone receptor-associated protein complex 95 kDa component, Vitamin D3 receptor-interacting protein complex component DRIP92

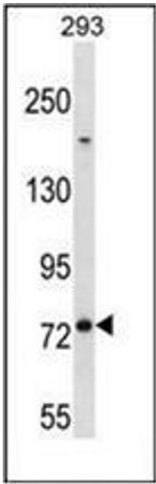
Molecular Weight:	72kd
Gene ID:	10025
NCBI Accession:	<a href="#">NP_005472</a>
Pathways:	<a href="#">Intracellular Steroid Hormone Receptor Signaling Pathway</a> , <a href="#">Nuclear Hormone Receptor Binding</a> , <a href="#">Regulation of Lipid Metabolism by PPARalpha</a>

## Application Details

Application Notes:	Optimal working dilution should be determined by the investigator.
Restrictions:	For Research Use only

## Handling

Format:	Liquid
Concentration:	0.25 mg/mL
Buffer:	PBS containing 0.09 % (W/V) Sodium Azide as preservative
Preservative:	Sodium azide
Precaution of Use:	This product contains sodium azide: a POISONOUS AND HAZARDOUS SUBSTANCE which should be handled by trained staff only.
Handling Advice:	Avoid repeated freezing and thawing.
Storage:	4 °C/-20 °C
Storage Comment:	Store undiluted at 2-8 °C for one month or (in aliquots) at -20 °C for longer.



Western Blotting

**Image 1.** Western blot analysis of MED16 Antibody (Center) in 293 cell line lysates (35ug/lane). This demonstrates the MED16 antibody detected the MED16 protein (arrow).