

Datasheet for ABIN953382
anti-MEIG1 antibody (Middle Region)[Go to Product page](#)

2 Images

Overview

Quantity:	0.4 mL
Target:	MEIG1
Binding Specificity:	AA 35-65, Middle Region
Reactivity:	Human
Host:	Rabbit
Clonality:	Polyclonal
Conjugate:	This MEIG1 antibody is un-conjugated
Application:	Western Blotting (WB), Enzyme Immunoassay (EIA)

Product Details

Immunogen:	KLH conjugated synthetic peptide between 35-65 amino acids from the Central region of human MEIG1
Isotype:	Ig Fraction
Specificity:	This antibody reacts to MEIG1.
Cross-Reactivity (Details):	Species reactivity (tested):Human.
Purification:	Affinity chromatography on Protein A

Target Details

Target:	MEIG1
Alternative Name:	MEIG1 (MEIG1 Products)

Target Details

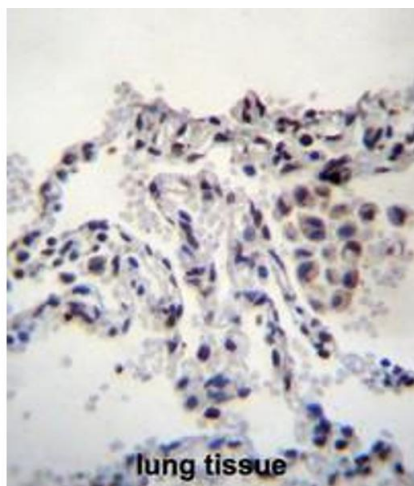
Background:	MEIG1 may be involved in germ cell differentiation (By similarity).Synonyms: Meiosis expressed gene 1 protein homolog
Molecular Weight:	10795 Da
Gene ID:	644890
NCBI Accession:	NP_001074305

Application Details

Application Notes:	Optimal working dilution should be determined by the investigator.
Restrictions:	For Research Use only

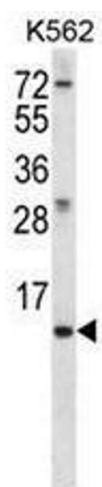
Handling

Format:	Liquid
Concentration:	0.25 mg/mL
Buffer:	PBS, 0.09 % (W/V) sodium azide
Preservative:	Sodium azide
Precaution of Use:	This product contains sodium azide: a POISONOUS AND HAZARDOUS SUBSTANCE which should be handled by trained staff only.
Handling Advice:	Avoid repeated freezing and thawing.
Storage:	4 °C/-20 °C
Storage Comment:	Store the antibody undiluted at 2-8 °C for one month or (in aliquots) at -20 °C for longer.



Immunohistochemistry (Paraffin-embedded Sections)

Image 1. MEIG1 Antibody (Center) immunohistochemistry analysis in formalin fixed and paraffin embedded human lung tissue followed by peroxidase conjugation of the secondary antibody and DAB staining. This data demonstrates the use of MEIG1 Antibody (Center) for immunohistochemistry. Clinical relevance has not been evaluated.



Western Blotting

Image 2. MEIG1 Antibody (Center) western blot analysis in K562 cell line lysates (35µg/lane). This demonstrates the MEIG1 antibody detected the MEIG1 protein (arrow).