



[Go to Product page](#)

Datasheet for ABIN953384

anti-Melanophilin antibody (C-Term)

2 Images

Overview

Quantity:	0.4 mL
Target:	Melanophilin (MLPH)
Binding Specificity:	AA 540-569, C-Term
Reactivity:	Human
Host:	Rabbit
Clonality:	Polyclonal
Conjugate:	This Melanophilin antibody is un-conjugated
Application:	Western Blotting (WB), Immunohistochemistry (Paraffin-embedded Sections) (IHC (p)), Enzyme Immunoassay (EIA)

Product Details

Immunogen:	Synthetic peptide - KLH conjugated - corresponding to the C-terminal region (between 540-569aa) of human Melanophilin.
Isotype:	Ig Fraction
Specificity:	This antibody recognizes Melanophilin / MLPH at C-term.
Cross-Reactivity (Details):	Species reactivity (tested):Human
Purification:	Purified through a Protein A column followed by peptide affinity purification

Target Details

Target:	Melanophilin (MLPH)
---------	---------------------

Target Details

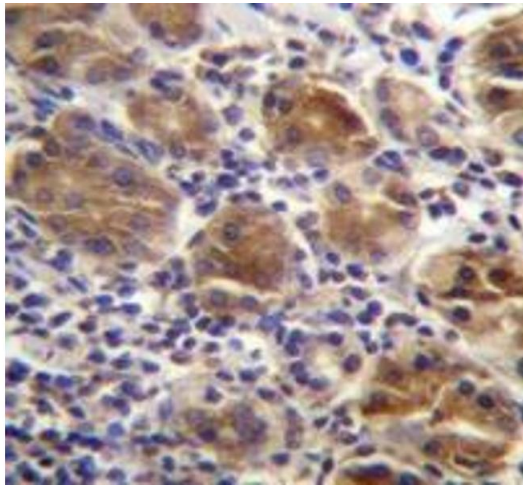
Alternative Name:	Melanophilin (MLPH Products)
Background:	<p>The MLPH gene encodes a member of the exophilin subfamily of Rab effector proteins, Melanophilin. The protein forms a ternary complex with the small Ras-related GTPase Rab27A in its GTP-bound form and the motor protein myosin Va. A similar protein complex in mouse functions to tether pigment-producing organelles called melanosomes to the actin cytoskeleton in melanocytes, and is required for visible pigmentation in the hair and skin. A mutation in this gene results in Griscelli syndrome type 3, which is characterized by a silver-gray hair color and abnormal pigment distribution in the hair shaft. Several alternatively spliced transcript variants of this gene have been described, but the full-length nature of some of these variants has not been determined. Synonyms: Exophilin-3, Leaden protein, Ln, Mlph, Slac2a, Slp homolog lacking C2 domains a, Synaptotagmin-like protein 2a</p>
Gene ID:	79083
NCBI Accession:	NP_001035932

Application Details

Application Notes:	Optimal working dilution should be determined by the investigator.
Restrictions:	For Research Use only

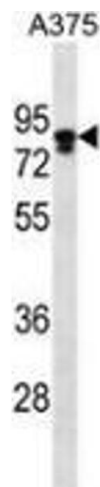
Handling

Format:	Liquid
Concentration:	0.25 mg/mL
Buffer:	PBS with 0.09 % (W/V) Sodium azide
Preservative:	Sodium azide
Precaution of Use:	This product contains sodium azide: a POISONOUS AND HAZARDOUS SUBSTANCE which should be handled by trained staff only.
Handling Advice:	Avoid repeated freezing and thawing.
Storage:	4 °C/-20 °C
Storage Comment:	Store undiluted at 2-8 °C for one month or (in aliquots) at -20 °C for longer.



Immunohistochemistry (Paraffin-embedded Sections)

Image 1. Immunohistochemistry analysis in human stomach tissue (Formalin-fixed, Paraffin-embedded) using Melanophilin / MLPH Antibody (C-term), followed by peroxidase conjugation of the secondary antibody and DAB staining. This data demonstrates the use of MLPH antibody for IHC; Clinical relevance has not been evaluated.



Western Blotting

Image 2. Western blot analysis in A375 cell line lysates (35ug/lane) using Melanophilin / MLPH Antibody (C-term). This demonstrates the MLPH antibody detected the MLPH protein (arrow).