

Datasheet for ABIN953390
anti-MESDC2 antibody (C-Term)

3 Images

[Go to Product page](#)

Overview

Quantity:	0.4 mL
Target:	MESDC2
Binding Specificity:	AA 203-234, C-Term
Reactivity:	Human
Host:	Rabbit
Clonality:	Polyclonal
Conjugate:	This MESDC2 antibody is un-conjugated
Application:	Western Blotting (WB), Immunofluorescence (IF), Enzyme Immunoassay (EIA)

Product Details

Immunogen:	KLH conjugated synthetic peptide between 203-234 amino acids from the C-terminal region of human MESDC2
Isotype:	Ig Fraction
Specificity:	This antibody reacts to MESDC2.
Cross-Reactivity (Details):	Species reactivity (tested):Human.
Purification:	Affinity chromatography on Protein A

Target Details

Target:	MESDC2
Alternative Name:	MESDC2 (MESDC2 Products)

Target Details

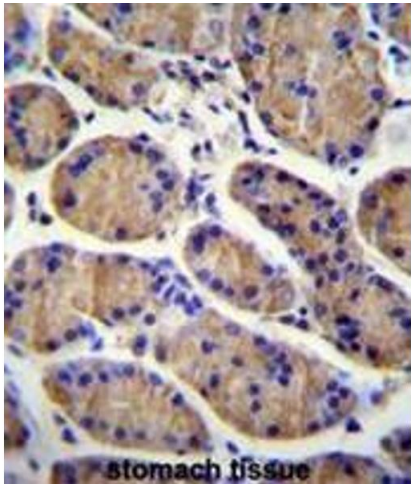
Background:	Chaperone specifically assisting the folding of beta-propeller/EGF modules within the family of low-density lipoprotein receptors (LDLRs). Acts as a modulator of the Wnt pathway through chaperoning the coreceptors of the canonical Wnt pathway, LRP5 and LRP6, to the plasma membrane. Essential for specification of embryonic polarity and mesoderm induction.Synonyms: KIAA0081, MESDC2, Mesoderm development candidate 2, UNQ1911/PRO4369
Molecular Weight:	26077 Da
Gene ID:	23184
NCBI Accession:	NP_055969

Application Details

Application Notes:	Optimal working dilution should be determined by the investigator.
Restrictions:	For Research Use only

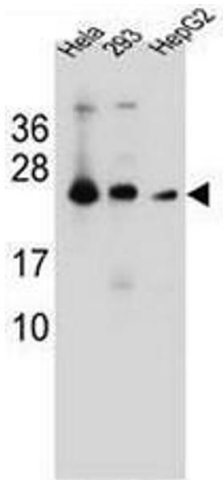
Handling

Format:	Liquid
Concentration:	0.25 mg/mL
Buffer:	PBS, 0.09 % (W/V) sodium azide
Preservative:	Sodium azide
Precaution of Use:	This product contains sodium azide: a POISONOUS AND HAZARDOUS SUBSTANCE which should be handled by trained staff only.
Handling Advice:	Avoid repeated freezing and thawing.
Storage:	4 °C/-20 °C
Storage Comment:	Store the antibody undiluted at 2-8 °C for one month or (in aliquots) at -20 °C for longer.



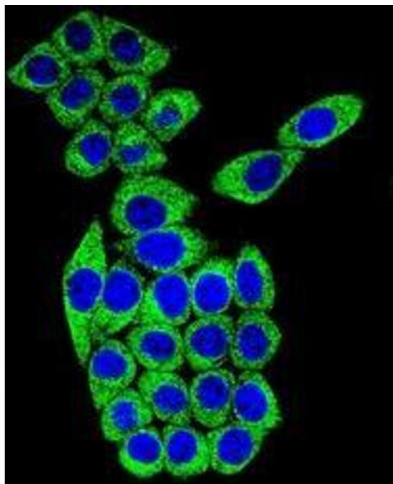
Immunohistochemistry (Paraffin-embedded Sections)

Image 1. MESDC2 Antibody (C-term) immunohistochemistry analysis in formalin fixed and paraffin embedded human stomach tissue followed by peroxidase conjugation of the secondary antibody and DAB staining. This data demonstrates the use of MESDC2 Antibody (C-term) for immunohistochemistry. Clinical relevance has not been evaluated.



Western Blotting

Image 2. MESDC2 Antibody (C-term) western blot analysis in HeLa, 293, HepG2 cell line lysates (35µg/lane). This demonstrates the MESDC2 antibody detected the MESDC2 protein (arrow).



Immunofluorescence

Image 3. Confocal immunofluorescent analysis of MESDC2 Antibody (C-term)(Cat#AP52669PU-N) with 293 cell followed by Alexa Fluor 488-conjugated goat anti-rabbit IgG (green). DAPI was used to stain the cell nuclear (blue).