

Datasheet for ABIN953398  
**anti-METTL11B antibody (N-Term)**[Go to Product page](#)

## 1 Image

## Overview

Quantity:	0.4 mL
Target:	METTL11B (C10RF184)
Binding Specificity:	AA 13-42, N-Term
Reactivity:	Mouse, Human
Host:	Rabbit
Clonality:	Polyclonal
Conjugate:	This METTL11B antibody is un-conjugated
Application:	Western Blotting (WB), Enzyme Immunoassay (EIA)

## Product Details

Immunogen:	KLH conjugated synthetic peptide between 13-42 amino acids from the N-terminal region of human METTL11B
Isotype:	Ig Fraction
Specificity:	This antibody reacts to METTL11B.
Cross-Reactivity (Details):	Species reactivity (tested):Mouse.
Purification:	Affinity chromatography on Protein A

## Target Details

Target:	METTL11B (C10RF184)
Alternative Name:	METTL11B / C1orf184 ( <a href="#">C10RF184 Products</a> )

## Target Details

**Background:** METTL11B is alpha-N-methyltransferase that methylates the N-terminus of target proteins containing the N-terminal motif [Ala/Pro/Ser]-Pro-Lys when the initiator Met is cleaved. Specifically catalyzes mono-, di- or tri-methylation of exposed alpha-amino group of Ala, Pro or Ser residue in the [Ala/Pro/Ser]-Pro-Lys motif (By similarity). Synonyms: Methyltransferase-like protein 11B, NTM1B, X-Pro-Lys N-terminal protein methyltransferase 1B

**Molecular Weight:** 32400 Da

**Gene ID:** 149281

**NCBI Accession:** [NP\\_001129579](#)

## Application Details

**Application Notes:** Optimal working dilution should be determined by the investigator.

**Restrictions:** For Research Use only

## Handling

**Format:** Liquid

**Concentration:** 0.25 mg/mL

**Buffer:** PBS, 0.09 % (W/V) sodium azide

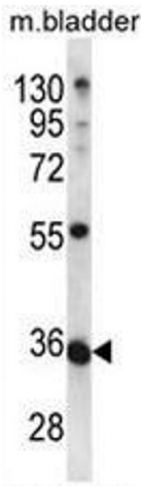
**Preservative:** Sodium azide

**Precaution of Use:** This product contains sodium azide: a POISONOUS AND HAZARDOUS SUBSTANCE which should be handled by trained staff only.

**Handling Advice:** Avoid repeated freezing and thawing.

**Storage:** 4 °C/-20 °C

**Storage Comment:** Store the antibody undiluted at 2-8 °C for one month or (in aliquots) at -20 °C for longer.



Western Blotting

**Image 1.** METTL11B Antibody (N-term) western blot analysis in mouse bladder tissue lysates (35µg/lane). This demonstrates the METTL11B antibody detected the METTL11B protein (arrow).