

Datasheet for ABIN953399
anti-METTL2 antibody (C-Term)[Go to Product page](#)

3 Images

Overview

Quantity:	0.4 mL
Target:	METTL2
Binding Specificity:	AA 336-367, C-Term
Reactivity:	Human
Host:	Rabbit
Clonality:	Polyclonal
Conjugate:	This METTL2 antibody is un-conjugated
Application:	Western Blotting (WB), Immunofluorescence (IF), Enzyme Immunoassay (EIA)

Product Details

Immunogen:	KLH conjugated synthetic peptide between 336-367 amino acids from the C-terminal region of human METTL2
Isotype:	Ig Fraction
Specificity:	This antibody reacts to METTL2.
Cross-Reactivity (Details):	Species reactivity (tested):Human.
Purification:	Affinity chromatography on Protein A

Target Details

Target:	METTL2
Alternative Name:	METTL2 (METTL2 Products)

Target Details

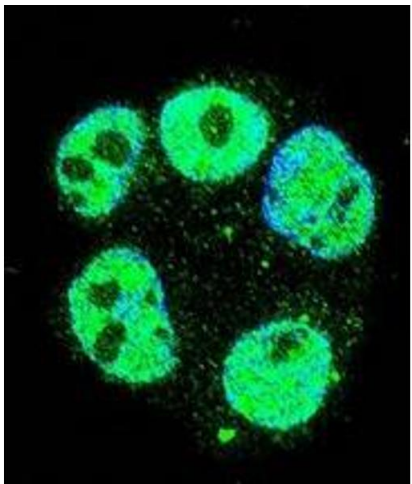
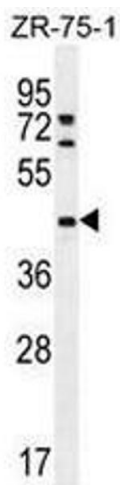
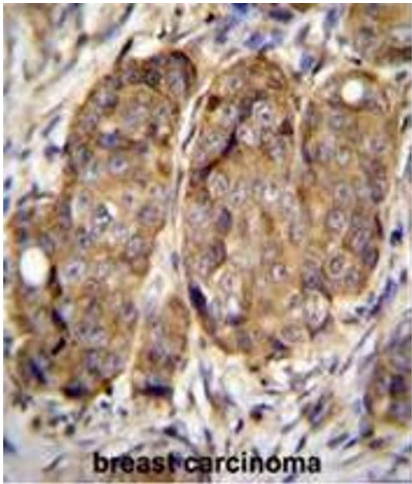
Background:	METTL2A is probable methyltransferase (By similarity).Synonyms: A, Methyltransferase-like protein 2A
Molecular Weight:	43537 Da
Gene ID:	339175
NCBI Accession:	NP_859076

Application Details

Application Notes:	Optimal working dilution should be determined by the investigator.
Restrictions:	For Research Use only

Handling

Format:	Liquid
Concentration:	0.25 mg/mL
Buffer:	PBS, 0.09 % (W/V) sodium azide.
Preservative:	Sodium azide
Precaution of Use:	This product contains sodium azide: a POISONOUS AND HAZARDOUS SUBSTANCE which should be handled by trained staff only.
Handling Advice:	Avoid repeated freezing and thawing.
Storage:	4 °C/-20 °C
Storage Comment:	Store the antibody undiluted at 2-8 °C for one month or (in aliquots) at -20 °C for longer.



Immunohistochemistry (Paraffin-embedded Sections)

Image 1. METTL2 Antibody (C-term) immunohistochemistry analysis in formalin fixed and paraffin embedded human breast carcinoma followed by peroxidase conjugation of the secondary antibody and DAB staining. This data demonstrates the use of METTL2 Antibody (C-term) for immunohistochemistry. Clinical relevance has not been evaluated.

Western Blotting

Image 2. METTL2 Antibody (C-term) western blot analysis in ZR-75-1 cell line lysates (35µg/lane). This demonstrates the METTL2 antibody detected the METTL2 protein (arrow).

Immunofluorescence

Image 3. Confocal immunofluorescent analysis of METTL2 Antibody (C-term)(Cat#AP52675PU-N) with ZR-75-1 cell followed by Alexa Fluor 488-conjugated goat anti-rabbit IgG (green). DAPI was used to stain the cell nuclear (blue).