



Datasheet for ABIN953400  
**anti-METTL4 antibody (C-Term)**



[Go to Product page](#)

3 Images

### Overview

|                      |  |
|----------------------|--|
| Quantity:            | 200 µL   |
| Target:              | METTL4   |
| Binding Specificity: | AA 322-352, C-Term   |
| Reactivity:          | Human, Mouse   |
| Host:                | Rabbit   |
| Clonality:           | Polyclonal   |
| Conjugate:           | This METTL4 antibody is un-conjugated  |
| Application:         | Western Blotting (WB), Immunohistochemistry (Paraffin-embedded Sections) (IHC (p)), Enzyme Immunoassay (EIA) |

### Product Details

|                             |   |
|-----------------------------|---|
| Immunogen:                  | KLH conjugated synthetic peptide between 322-352 amino acids from the C-terminal region of human METTL4 |
| Isotype:                    | Ig Fraction   |
| Specificity:                | This antibody reacts to METTL4.   |
| Cross-Reactivity (Details): | Species reactivity (tested):Human and Mouse.  |
| Purification:               | Affinity chromatography on Protein A  |

### Target Details

|         |        |
|---------|--------|
| Target: | METTL4 |
|---------|--------|

## Target Details

---

|                   |  |
|-------------------|--|
| Alternative Name: | METTL4 ( <a href="#">METTL4 Products</a> ) |
| Background:       | Synonyms: Methyltransferase-like protein 4 |
| Molecular Weight: | 54041 Da                                   |
| Gene ID:          | 64863                                      |
| NCBI Accession:   | <a href="#">NP_073751</a>                  |

## Application Details

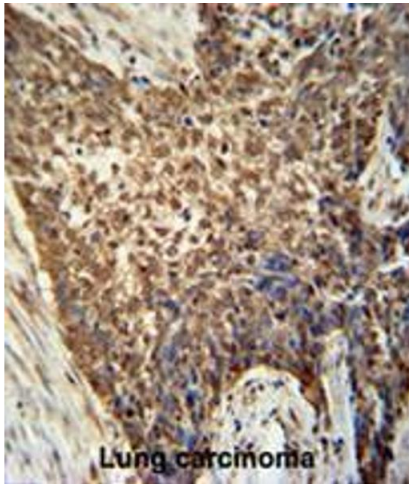
---

|                    |  |
|--------------------|--|
| Application Notes: | Optimal working dilution should be determined by the investigator. |
| Restrictions:      | For Research Use only  |

## Handling

---

|                    |  |
|--------------------|--|
| Format:            | Liquid   |
| Concentration:     | 0.25 mg/mL   |
| Buffer:            | PBS, 0.09 % (W/V) sodium azide   |
| Preservative:      | Sodium azide   |
| Precaution of Use: | This product contains sodium azide: a POISONOUS AND HAZARDOUS SUBSTANCE which should be handled by trained staff only. |
| Handling Advice:   | Avoid repeated freezing and thawing.   |
| Storage:           | 4 °C/-20 °C  |
| Storage Comment:   | Store the antibody undiluted at 2-8 °C for one month or (in aliquots) at -20 °C for longer.                            |



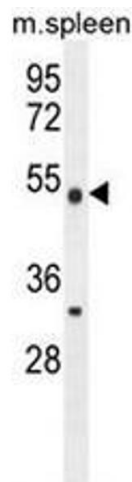
### Immunohistochemistry (Paraffin-embedded Sections)

**Image 1.** METTL4 antibody (C-term) immunohistochemistry analysis in formalin fixed and paraffin embedded human Lung carcinoma followed by peroxidase conjugation of the secondary antibody and DAB staining. This data demonstrates the use of the METTL4 antibody (C-term) for immunohistochemistry. Clinical relevance has not been evaluated.



### Western Blotting

**Image 2.** METTL4 Antibody (C-term) western blot analysis in 293 cell line lysates (35µg/lane). This demonstrates the METTL4 antibody detected the METTL4 protein (arrow).



### Western Blotting

**Image 3.** METTL4 Antibody (C-term) western blot analysis in mouse spleen tissue lysates (35µg/lane). This demonstrates the METTL4 antibody detected the METTL4 protein (arrow).