

Datasheet for ABIN953404  
**anti-MFS10 antibody (Middle Region)**[Go to Product page](#)

## 1 Image

## Overview

Quantity:	0.4 mL
Target:	MFS10 (MFSD10)
Binding Specificity:	AA 252-282, Middle Region
Reactivity:	Human
Host:	Rabbit
Clonality:	Polyclonal
Conjugate:	This MFS10 antibody is un-conjugated
Application:	Western Blotting (WB), Enzyme Immunoassay (EIA)

## Product Details

Immunogen:	KLH conjugated synthetic peptide between 252-282 amino acids from the Central region of human MFS10
Isotype:	Ig Fraction
Specificity:	This antibody reacts to MFS10.
Cross-Reactivity (Details):	Species reactivity (tested):Human.
Purification:	Affinity chromatography on Protein A

## Target Details

Target:	MFS10 (MFSD10)
Alternative Name:	MFSD10 / TETRAN ( <a href="#">MFSD10 Products</a> )

## Target Details

Background:	This gene encodes a member of the major facilitator superfamily of transporter proteins. The encoded protein likely functions in efflux of organic anions, including the non-steroidal anti-inflammatory drugs indomethacin and diclofenac. Alternatively spliced transcript variants have been described. [provided by RefSeq].Synonyms: Major facilitator superfamily domain-containing protein 10, Tetracycline transporter-like protein
-------------	---

Molecular Weight:	48339 Da
-------------------	----------

Gene ID:	10227
----------	-------

NCBI Accession:	<a href="#">NP_001111</a>
-----------------	---------------------------

## Application Details

Application Notes:	Optimal working dilution should be determined by the investigator.
--------------------	--

Restrictions:	For Research Use only
---------------	-----------------------

## Handling

Format:	Liquid
---------	--------

Concentration:	0.25 mg/mL
----------------	------------

Buffer:	PBS, 0.09 % (W/V) sodium azide
---------	--------------------------------

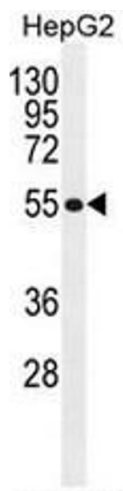
Preservative:	Sodium azide
---------------	--------------

Precaution of Use:	This product contains sodium azide: a POISONOUS AND HAZARDOUS SUBSTANCE which should be handled by trained staff only.
--------------------	--

Handling Advice:	Avoid repeated freezing and thawing.
------------------	--------------------------------------

Storage:	4 °C/-20 °C
----------	-------------

Storage Comment:	Store the antibody undiluted at 2-8 °C for one month or (in aliquots) at -20 °C for longer.
------------------	---



Western Blotting

**Image 1.** MFS10 Antibody (Center) western blot analysis in HepG2 cell line lysates (35µg/lane). This demonstrates the MFS10 antibody detected the MFS10 protein (arrow).