

Datasheet for ABIN953441
anti-MICAL-Like 1 antibody (C-Term)[Go to Product page](#)

2 Images

Overview

Quantity:	0.4 mL
Target:	MICAL-Like 1 (MICALL1)
Binding Specificity:	AA 759-789, C-Term
Reactivity:	Human
Host:	Rabbit
Clonality:	Polyclonal
Conjugate:	This MICAL-Like 1 antibody is un-conjugated
Application:	Western Blotting (WB), Immunohistochemistry (Paraffin-embedded Sections) (IHC (p)), Enzyme Immunoassay (EIA)

Product Details

Immunogen:	Synthetic peptide - KLH conjugated - corresponding to the C-terminal region (between 759-789aa) of human MICAL-like protein 1.
Isotype:	Ig Fraction
Specificity:	This antibody detects humna MICAL-like protein 1 at C-term.
Cross-Reactivity (Details):	Species reactivity (tested):Human
Purification:	Purified through a protein A column; followed by peptide affinity purification.

Target Details

Target:	MICAL-Like 1 (MICALL1)
---------	------------------------

Target Details

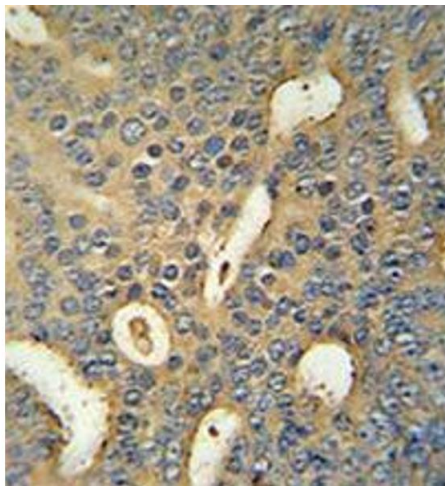
Alternative Name:	MICAL-Like Protein 1 (MICALL1 Products)
Background:	MICAL-like protein 1/MICALL1 may be a cytoskeletal regulator.Synonyms: KIAA1668, MICALL1, MIRAB13
Gene ID:	85377
NCBI Accession:	NP_203744

Application Details

Application Notes:	Optimal working dilution should be determined by the investigator.
Restrictions:	For Research Use only

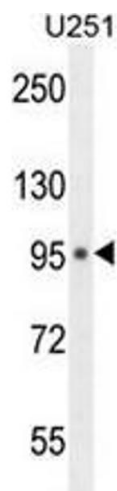
Handling

Format:	Liquid
Concentration:	0.25 mg/mL
Buffer:	PBS with 0.09 % (W/V) Sodium Azide.
Preservative:	Sodium azide
Precaution of Use:	This product contains sodium azide: a POISONOUS AND HAZARDOUS SUBSTANCE which should be handled by trained staff only.
Handling Advice:	Avoid repeated freezing and thawing.
Storage:	4 °C/-20 °C
Storage Comment:	Store the antibody undiluted at 2-8 °C for one month or (in aliquots) at -20 °C for longer.



Immunohistochemistry (Paraffin-embedded Sections)

Image 1. Immunohistochemistry analysis in human prostate carcinoma (formalin-fixed, paraffin-embedded) using MICAL-like protein 1 Antibody (C-term), followed by peroxidase conjugation of the secondary antibody and DAB staining. This data demonstrates the use of the MICAL-like protein 1 antibody for IHC. Clinical relevance has not been evaluated.



Western Blotting

Image 2. Western blot analysis in U251 cell line lysates (35ug/lane) using MICAL-like protein 1 Antibody . This demonstrates the MICAL-like protein 1 antibody detected the MICALL1 protein (arrow).