

Datasheet for ABIN953443  
**anti-m1ip1 antibody (N-Term)**

## 2 Images

[Go to Product page](#)

## Overview

|                      |   |
|----------------------|---|
| Quantity:            | 0.4 mL  |
| Target:              | m1ip1   |
| Binding Specificity: | N-Term  |
| Reactivity:          | Human   |
| Host:                | Rabbit  |
| Clonality:           | Polyclonal  |
| Conjugate:           | This m1ip1 antibody is un-conjugated  |
| Application:         | Western Blotting (WB), Immunohistochemistry (Paraffin-embedded Sections) (IHC (p)), Flow Cytometry (FACS), Enzyme Immunoassay (EIA) |

## Product Details

|                             |  |
|-----------------------------|--|
| Immunogen:                  | Synthetic peptide - KLH conjugated - corresponding to N-terminal region of human Mid1-interacting protein 1. |
| Isotype:                    | Ig Fraction  |
| Specificity:                | This antibody detects human Mid1-interacting protein 1.  |
| Cross-Reactivity (Details): | Species reactivity (tested):Human  |
| Purification:               | Prepared by Saturated Ammonium Sulfate (SAS) precipitation followed by dialysis against PBS.                 |

## Target Details

|         |       |
|---------|-------|
| Target: | m1ip1 |
|---------|-------|

## Target Details

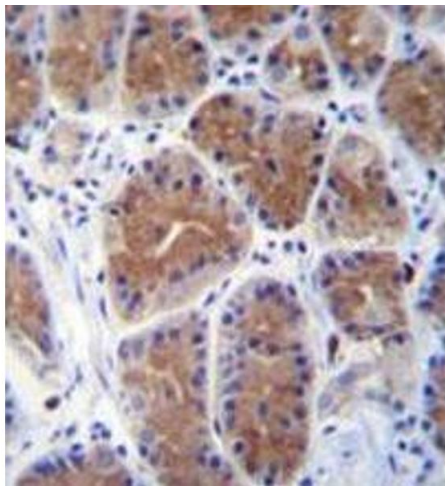
|                   |   |
|-------------------|---|
| Alternative Name: | Mid1-Interacting Protein 1 ( <a href="#">m1ip1 Products</a> )   |
| Background:       | MID1IP1 is involved in stabilization of microtubules (By similarity).Synonyms: Gastrulation-specific G12-like protein, MID1IP1, MIG12, Mid1-interacting G12-like protein, STRAIT11499 |
| Gene ID:          | 58526   |
| NCBI Accession:   | <a href="#">NP_001092260</a>  |

## Application Details

|                    |  |
|--------------------|--|
| Application Notes: | Optimal working dilution should be determined by the investigator. |
| Restrictions:      | For Research Use only  |

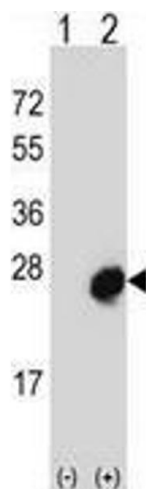
## Handling

|                    |  |
|--------------------|--|
| Format:            | Liquid   |
| Concentration:     | 0.25 mg/mL   |
| Buffer:            | PBS with 0.09 % (W/V) Sodium Azide.  |
| Preservative:      | Sodium azide   |
| Precaution of Use: | This product contains sodium azide: a POISONOUS AND HAZARDOUS SUBSTANCE which should be handled by trained staff only. |
| Handling Advice:   | Avoid repeated freezing and thawing.   |
| Storage:           | 4 °C/-20 °C  |
| Storage Comment:   | Store the antibody undiluted at 2-8 °C for one month or (in aliquots) at -20 °C for longer.                            |



**Immunohistochemistry (Paraffin-embedded Sections)**

**Image 1.** Immunohistochemistry analysis in human stomach tissue (formalin-fixed, paraffin-embedded) using Mid1-interacting protein 1 Antibody (N-term), followed by peroxidase conjugation of the secondary antibody and DAB staining. This data demonstrates the use of MID1IP1 antibody for IHC. Clinical relevance has not been evaluated.



**Western Blotting**

**Image 2.** Western blot analysis of Mid1-interacting protein 1 (arrow) using rabbit polyclonal MID1IP1 Antibody (N-term). 293 cell lysates (2 ug/lane) either nontransfected (Lane 1) or transiently transfected (Lane 2) with the MID1IP1 gene.