

Datasheet for ABIN953444
anti-Midkine antibody (C-Term)[Go to Product page](#)

4 Images

Overview

Quantity:	0.4 mL
Target:	Midkine (MDK)
Binding Specificity:	AA 110-143, C-Term
Reactivity:	Human, Mouse
Host:	Rabbit
Clonality:	Polyclonal
Conjugate:	This Midkine antibody is un-conjugated
Application:	Western Blotting (WB), Immunofluorescence (IF), Enzyme Immunoassay (EIA), Immunohistochemistry (Paraffin-embedded Sections) (IHC (p))

Product Details

Immunogen:	KLH conjugated synthetic peptide between 110-143 amino acids from the C-terminal region of Human Midkine Genename: MDK
Isotype:	Ig Fraction
Specificity:	This antibody recognizes Human and Mouse Midkine (C-term).
Purification:	Saturated Ammonium Sulfate (SAS) precipitation followed by dialysis against PBS

Target Details

Target:	Midkine (MDK)
Alternative Name:	Midkine (MDK Products)

Target Details

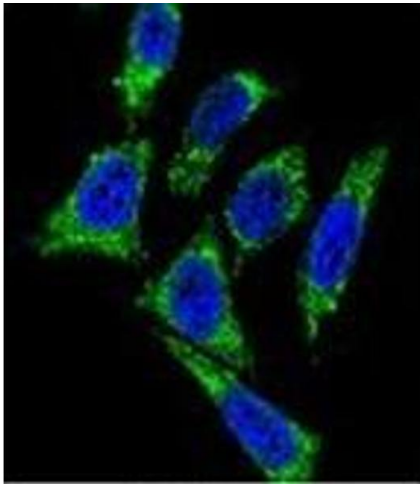
Background:	Midkine is a retinoic acid-responsive, heparin-binding growth factor expressed in various cell types during embryogenesis. It promotes angiogenesis, cell growth, and cell migration. Midkine is also expressed in several carcinomas, suggesting that it may play a role in tumorigenesis, perhaps through its effects on angiogenesis (summary by Reynolds et al., 2004 [PubMed 15197188]).Synonyms: Amphiregulin-associated protein, MDK, MK, MK1, Midgestation and kidney protein, NEGF2, Neurite outgrowth-promoting factor 2, Neurite outgrowth-promoting protein
Molecular Weight:	15585 Da
Gene ID:	4192
NCBI Accession:	NP_001012333
Pathways:	RTK Signaling , M Phase , Skeletal Muscle Fiber Development

Application Details

Application Notes:	Optimal working dilution should be determined by the investigator.
Restrictions:	For Research Use only

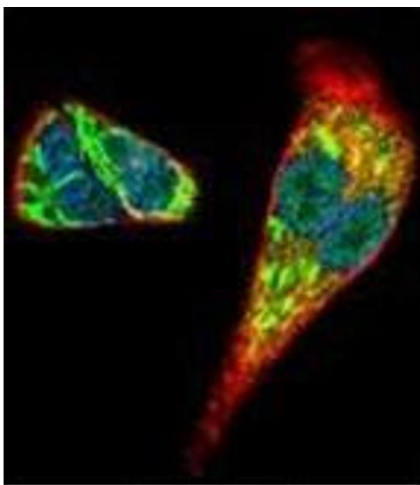
Handling

Format:	Liquid
Concentration:	0.25 mg/mL
Buffer:	PBS containing 0.09 % (W/V) Sodium Azide as preservative
Preservative:	Sodium azide
Precaution of Use:	This product contains sodium azide: a POISONOUS AND HAZARDOUS SUBSTANCE which should be handled by trained staff only.
Handling Advice:	Avoid repeated freezing and thawing.
Storage:	4 °C/-20 °C
Storage Comment:	Store undiluted at 2-8 °C for one month or (in aliquots) at -20 °C for longer.



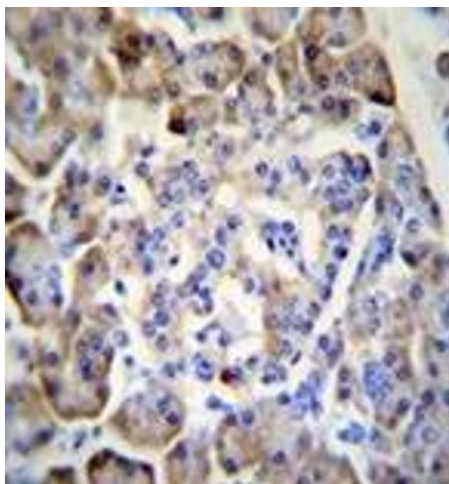
Immunofluorescence

Image 1. Confocal immunofluorescent analysis of Midkine Antibody (C-term) Cat.-No AP52643PU-N with HeLa cell followed by Alexa Fluor®488-conjugated goat anti-rabbit IgG (green). DAPI was used to stain the cell nuclear (blue).



Immunofluorescence

Image 2. Confocal immunofluorescent analysis of Midkine Antibody (C-term) Cat.-No AP52643PU-N with HepG2 cell followed by Alexa Fluor®488-conjugated goat anti-rabbit IgG (green). Actin filaments have been labeled with Alexa Fluor555 phalloidin (red). DAPI was used to stain the cell nuclear (blue).



Immunohistochemistry (Paraffin-embedded Sections)

Image 3. Immunohistochemistry analysis in formalin fixed and paraffin embedded human pancreas tissue reacted with Midkine Antibody (C-term) followed which was peroxidase conjugated to the secondary antibody and followed by DAB staining.

Please check the [product details page](#) for more images. Overall 4 images are available for ABIN953444.