

Datasheet for ABIN953469

**anti-Meningioma 1 antibody (Middle Region)**[Go to Product page](#)**1** Image

## Overview

Quantity:	0.4 mL
Target:	Meningioma 1 (MN1)
Binding Specificity:	AA 842-872, Middle Region
Reactivity:	Human
Host:	Rabbit
Clonality:	Polyclonal
Conjugate:	This Meningioma 1 antibody is un-conjugated
Application:	Western Blotting (WB), Enzyme Immunoassay (EIA)

## Product Details

Immunogen:	KLH conjugated synthetic peptide between 842-872 amino acids from the Central region of human MN1.
Isotype:	Ig Fraction
Specificity:	This antibody recognizes Human MN1 (Center).
Purification:	Protein A column, followed by peptide affinity purification

## Target Details

Target:	Meningioma 1 (MN1)
Alternative Name:	MN1 ( <a href="#">MN1 Products</a> )
Background:	Meningioma 1 (MN1) contains two sets of CAG repeats. It is disrupted by a balanced

## Target Details

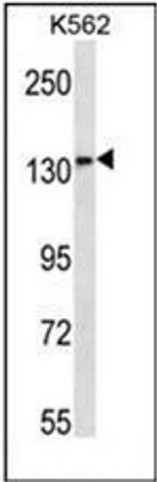
	translocation (4,22) in a meningioma, and its inactivation may contribute to meningioma 32 pathogenesis.Synonyms: Probable tumor suppressor protein MN1, meningioma 1
Molecular Weight:	136001 Da
Gene ID:	4330
NCBI Accession:	<a href="#">NP_002421</a>

## Application Details

Application Notes:	Optimal working dilution should be determined by the investigator.
Restrictions:	For Research Use only

## Handling

Format:	Liquid
Concentration:	0.25 mg/mL
Buffer:	PBS containing 0.09 % (W/V) Sodium Azide as preservative
Preservative:	Sodium azide
Precaution of Use:	This product contains sodium azide: a POISONOUS AND HAZARDOUS SUBSTANCE which should be handled by trained staff only.
Handling Advice:	Avoid repeated freezing and thawing.
Storage:	4 °C/-20 °C
Storage Comment:	Store undiluted at 2-8 °C for one month or (in aliquots) at -20 °C for longer.



Western Blotting

**Image 1.** Western blot analysis of MN1 Antibody (Center) in K562 cell line lysates (35ug/lane). This demonstrates the MN1 antibody detected the MN1 protein (arrow).