

Datasheet for ABIN953473  
**anti-MOB1A antibody (N-Term)**

## 2 Images

[Go to Product page](#)

## Overview

Quantity:	0.4 mL
Target:	MOB1A (MOBKL1B)
Binding Specificity:	AA 4-33, N-Term
Reactivity:	Human
Host:	Rabbit
Clonality:	Polyclonal
Conjugate:	This MOB1A antibody is un-conjugated
Application:	Western Blotting (WB), Flow Cytometry (FACS), Enzyme Immunoassay (EIA)

## Product Details

Immunogen:	KLH conjugated synthetic peptide between 4-33 amino acids from the N-terminal region of Human MOBKL1B
Isotype:	Ig Fraction
Specificity:	This antibody recognizes Human MOBKL1B (N-term).
Purification:	Saturated Ammonium Sulfate (SAS) precipitation followed by dialysis against PBS

## Target Details

Target:	MOB1A (MOBKL1B)
Alternative Name:	MOBKL1B ( <a href="#">MOBKL1B Products</a> )
Background:	Activator of LATS1/2 in the Hippo signaling pathway which plays a pivotal role in organ size

## Target Details

control and tumor suppression by restricting proliferation and promoting apoptosis. The core of this pathway is composed of a kinase cascade wherein MST1/MST2, in complex with its regulatory protein SAV1, phosphorylates and activates LATS1/2 in complex with its regulatory protein MOB1, which in turn phosphorylates and inactivates YAP1 oncoprotein and WWTR1/TAZ. Phosphorylation of YAP1 by LATS1/2 inhibits its translocation into the nucleus to regulate cellular genes important for cell proliferation, cell death, and cell migration. Stimulates the kinase activity of STK38 and STK38L. Synonyms: C2orf6, MOB4B, MOBK1B, Mob1 alpha, Mob1 homolog 1B, Mps one binder kinase activator-like 1B, Protein Mob4B

Molecular Weight: 25080 Da

Gene ID: 55233

NCBI Accession: [NP\\_060691](#)

## Application Details

Application Notes: Optimal working dilution should be determined by the investigator.

Restrictions: For Research Use only

## Handling

Format: Liquid

Concentration: 0.25 mg/mL

Buffer: PBS containing 0.09 % (W/V) Sodium Azide as preservative

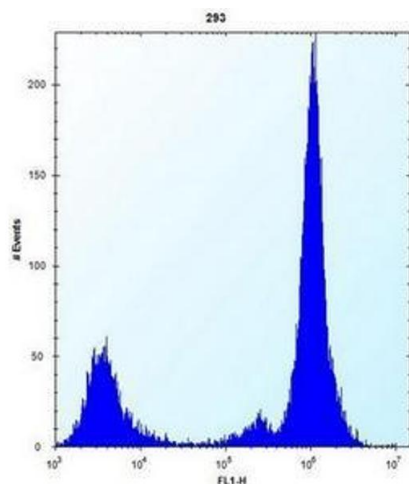
Preservative: Sodium azide

Precaution of Use: This product contains sodium azide: a POISONOUS AND HAZARDOUS SUBSTANCE which should be handled by trained staff only.

Handling Advice: Avoid repeated freezing and thawing.

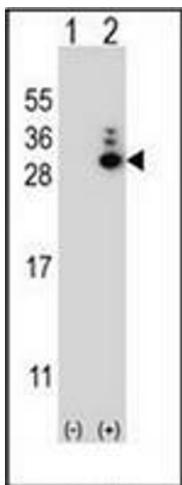
Storage: 4 °C/-20 °C

Storage Comment: Store undiluted at 2-8 °C for one month or (in aliquots) at -20 °C for longer.



Flow Cytometry

**Image 1.** Flow cytometric analysis of 293 cells using MOBKL1B Antibody (N-term) Cat.-No AP52718PU-N (right histogram) compared to a negative control cell (left histogram). FITC-conjugated goat-anti-rabbit secondary antibodies were used for the analysis.



Western Blotting

**Image 2.** Western blot analysis of MOBKL1B (arrow) using MOBKL1B Antibody (N-term) Cat.-No AP52718PU-N. 293 cell lysates (2 ug/lane) either nontransfected (Lane 1) or transiently transfected (Lane 2) with the MOBKL1B gene.