

Datasheet for ABIN953491
anti-MPP1 antibody (Middle Region)

4 Images

[Go to Product page](#)

Overview

| | |
|----------------------|---|
| Quantity: | 0.4 mL |
| Target: | MPP1 |
| Binding Specificity: | AA 304-331, Middle Region |
| Reactivity: | Human |
| Host: | Rabbit |
| Clonality: | Polyclonal |
| Conjugate: | This MPP1 antibody is un-conjugated |
| Application: | Western Blotting (WB), Flow Cytometry (FACS), Immunohistochemistry (Paraffin-embedded Sections) (IHC (p)), Enzyme Immunoassay (EIA) |

Product Details

| | |
|---------------|--|
| Immunogen: | Synthetic peptide - KLH conjugated - corresponding to the central region (between 304-331aa) of human MPP1. |
| Isotype: | Ig Fraction |
| Specificity: | This antibody recognizes human MPP1. |
| Purification: | Purified through a Protein A column followed by peptide affinity purification |

Target Details

| | |
|-------------------|--|
| Target: | MPP1 |
| Alternative Name: | MPP1 (MPP1 Products) |

Target Details

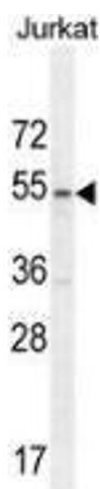
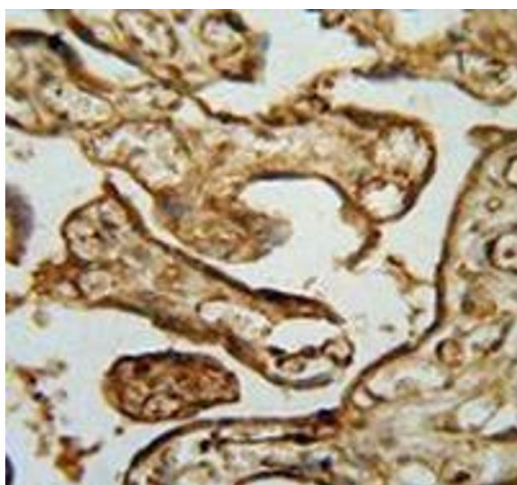
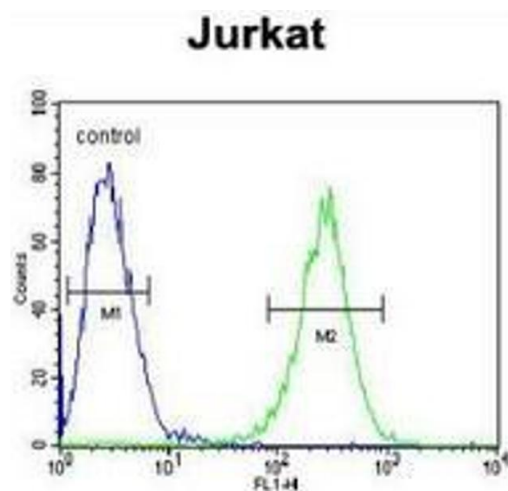
| | |
|-------------------|--|
| Background: | This gene encodes the prototype of the membrane-associated guanylate kinase (MAGUK) family proteins. MAGUKs interact with the cytoskeleton and regulate cell proliferation, signaling pathways, and intercellular junctions. The encoded protein is an extensively palmitoylated membrane phosphoprotein containing a PDZ domain, a Src homology 3 (SH3) motif, and a guanylate kinase domain. This gene product interacts with various cytoskeletal proteins and cell junctional proteins in different tissue and cell types, and may be involved in the regulation of cell shape, hair cell development, neural patterning of the retina, and apico-basal polarity and tumor suppression pathways in non-erythroid cells. Multiple transcript variants encoding different isoforms have been found for this gene.Synonyms: 55 kDa erythrocyte membrane protein, DXS552E, EMP55, Membrane protein, p55, palmitoylated 1 |
| Molecular Weight: | 52296 Da |
| Gene ID: | 4354 |
| NCBI Accession: | NP_001159932 |

Application Details

| | |
|--------------------|--|
| Application Notes: | Optimal working dilution should be determined by the investigator. |
| Restrictions: | For Research Use only |

Handling

| | |
|--------------------|--|
| Format: | Liquid |
| Concentration: | 0.25 mg/mL |
| Buffer: | PBS with 0.09 % (W/V) Sodium azide |
| Preservative: | Sodium azide |
| Precaution of Use: | This product contains sodium azide: a POISONOUS AND HAZARDOUS SUBSTANCE which should be handled by trained staff only. |
| Handling Advice: | Avoid repeated freezing and thawing. |
| Storage: | 4 °C/-20 °C |
| Storage Comment: | Store undiluted at 2-8 °C for one month or (in aliquots) at -20 °C for longer. |



Flow Cytometry

Image 1. flow cytometric analysis of Jurkat cells (right histogram) compared to a negative control cell (left histogram) using MPP1 Antibody , followed by FITC-conjugated goat-anti-rabbit secondary antibodies.

Immunohistochemistry (Paraffin-embedded Sections)

Image 2. Immunohistochemistry analysis in human placenta tissue (Formalin-fixed, Paraffin-embedded) using MPP1 Antibody , followed by peroxidase conjugated secondary antibody and DAB staining. This data demonstrates the use of this antibody for IHC. Clinical relevance has not been evaluated.

Western Blotting

Image 3. Western blot analysis in Jurkat cell line lysates (35ug/lane) using MPP1 Antibody . This demonstrates this antibody detected the MPP1 protein (arrow).

Please check the [product details page](#) for more images. Overall 4 images are available for ABIN953491.