

Datasheet for ABIN953511
anti-MRPL50 antibody (C-Term)[Go to Product page](#)

2 Images

Overview

Quantity:	0.4 mL
Target:	MRPL50
Binding Specificity:	AA 118-147, C-Term
Reactivity:	Human
Host:	Rabbit
Clonality:	Polyclonal
Conjugate:	This MRPL50 antibody is un-conjugated
Application:	Western Blotting (WB), Immunohistochemistry (Paraffin-embedded Sections) (IHC (p)), Enzyme Immunoassay (EIA)

Product Details

Immunogen:	KLH conjugated synthetic peptide between 118-147 amino acids from the C-terminal region of Human RM50. Genename: MRPL50
Isotype:	Ig Fraction
Specificity:	This antibody recognizes Human MRPL50 (C-term).
Purification:	Affinity Chromatography on Protein A

Target Details

Target:	MRPL50
Alternative Name:	MRPL50 (MRPL50 Products)

Target Details

Background:	Mammalian mitochondrial ribosomal proteins are encoded by nuclear genes and help in protein synthesis within the mitochondrion. Mitochondrial ribosomes (mitoribosomes) consist of a small 28S subunit and a large 39S subunit. They have an estimated 75 % protein to rRNA composition compared to prokaryotic ribosomes, where this ratio is reversed. Another difference between mammalian mitoribosomes and prokaryotic ribosomes is that the latter contain a 5S rRNA. Among different species, the proteins comprising the mitoribosome differ greatly in sequence, and sometimes in biochemical properties, which prevents easy recognition by sequence homology. This gene encodes a putative 39S subunit protein and belongs to the L47P ribosomal protein family. Pseudogenes corresponding to this gene are found on chromosomes 2p, 2q, 5p, and 10q.Synonyms: 39S ribosomal protein L50, L50mt, MRP-L50, mitochondrial
-------------	--

Molecular Weight:	18325 Da
-------------------	----------

Gene ID:	54534
----------	-------

NCBI Accession:	NP_061924
-----------------	---------------------------

Application Details

Application Notes:	Optimal working dilution should be determined by the investigator.
--------------------	--

Restrictions:	For Research Use only
---------------	-----------------------

Handling

Format:	Liquid
---------	--------

Concentration:	0.25 mg/mL
----------------	------------

Buffer:	PBS, 0.09 % Sodium Azide
---------	--------------------------

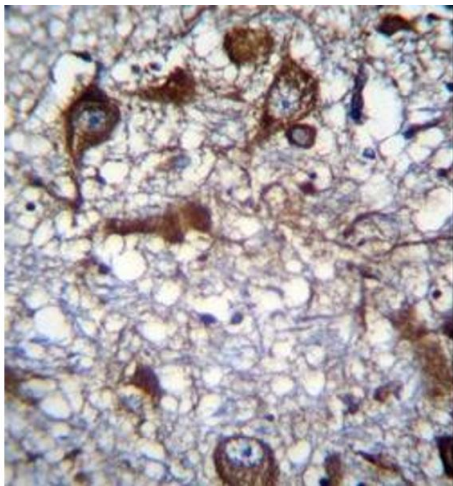
Preservative:	Sodium azide
---------------	--------------

Precaution of Use:	This product contains sodium azide: a POISONOUS AND HAZARDOUS SUBSTANCE which should be handled by trained staff only.
--------------------	--

Handling Advice:	Avoid repeated freezing and thawing.
------------------	--------------------------------------

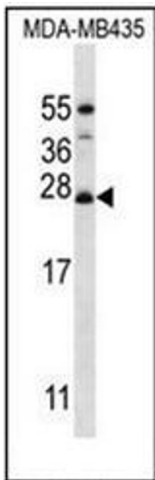
Storage:	4 °C/-20 °C
----------	-------------

Storage Comment:	Store undiluted at 2-8 °C for one month or (in aliquots) at -20 °C for longer.
------------------	--



Immunohistochemistry (Paraffin-embedded Sections)

Image 1. Formalin fixed, paraffin embedded human brain tissue stained with MRPL50 Antibody (C-term) followed by peroxidase conjugation of the secondary antibody and DAB staining. This data demonstrates the use of RM50 Antibody (C-term) for immunohistochemistry. Clinical relevance has not been evaluated.



Western Blotting

Image 2. Western blot analysis of MRPL50 Antibody (C-term) in MDA-MB435 cell line lysates (35ug/lane). This demonstrates the RM50 antibody detected the RM50 protein (arrow).