

Datasheet for ABIN953516

anti-MRPS12 antibody (Middle Region)**2** Images[Go to Product page](#)

Overview

Quantity:	0.4 mL
Target:	MRPS12
Binding Specificity:	AA 35-67, Middle Region
Reactivity:	Human
Host:	Rabbit
Clonality:	Polyclonal
Conjugate:	This MRPS12 antibody is un-conjugated
Application:	Western Blotting (WB), Immunohistochemistry (Paraffin-embedded Sections) (IHC (p)), Enzyme Immunoassay (EIA)

Product Details

Immunogen:	KLH conjugated synthetic peptide between 35-67 amino acids from the Central region of Human MRPS12 Genename: MRPS12
Isotype:	Ig Fraction
Specificity:	This antibody recognizes Human MRPS12 (Center).
Purification:	Affinity Chromatography on Protein A

Target Details

Target:	MRPS12
Alternative Name:	MRPS12 (MRPS12 Products)

Target Details

Background: Mammalian mitochondrial ribosomal proteins are encoded by nuclear genes and help in protein synthesis within the mitochondrion. Mitochondrial ribosomes (mitoribosomes) consist of a small 28S subunit and a large 39S subunit. They have an estimated 75 % protein to rRNA composition compared to prokaryotic ribosomes, where this ratio is reversed. Another difference between mammalian mitoribosomes and prokaryotic ribosomes is that the latter contain a 5S rRNA. Among different species, the proteins comprising the mitoribosome differ greatly in sequence, and sometimes in biochemical properties, which prevents easy recognition by sequence homology. This gene encodes a 28S subunit protein that belongs to the ribosomal protein S12P family. The encoded protein is a key component of the ribosomal small subunit and controls the decoding fidelity and susceptibility to aminoglycoside antibiotics. The gene for mitochondrial seryl-tRNA synthetase is located upstream and adjacent to this gene, and both genes are possible candidates for the autosomal dominant deafness gene (DFNA4). Splice variants that differ in the 5' UTR have been found for this gene, all three variants encode the same protein. Synonyms: 28S ribosomal protein S12, MRP-S12, MT-RPS12, RPMS12, RPSM12, S12mt, mitochondrial

Gene ID: 6183

NCBI Accession: [NP_066930](#)

Pathways: [Sensory Perception of Sound](#)

Application Details

Application Notes: Optimal working dilution should be determined by the investigator.

Restrictions: For Research Use only

Handling

Format: Liquid

Concentration: 0.25 mg/mL

Buffer: PBS, 0.09 % Sodium Azide

Preservative: Sodium azide

Precaution of Use: This product contains sodium azide: a POISONOUS AND HAZARDOUS SUBSTANCE which should be handled by trained staff only.

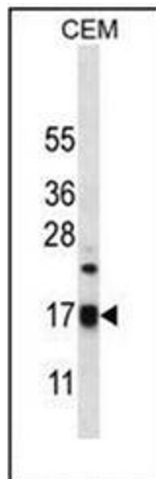
Handling Advice: Avoid repeated freezing and thawing.

Handling

Storage: 4 °C/-20 °C

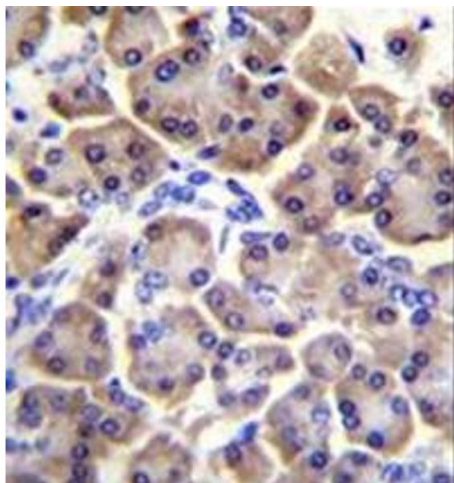
Storage Comment: Store undiluted at 2-8 °C for one month or (in aliquots) at -20 °C for longer.

Images



Western Blotting

Image 1. Western blot analysis of MRPS12 in CEM cell line lysates (35ug/lane). This demonstrates the MRPS12 antibody detected the MRPS12 protein (arrow).



Immunohistochemistry (Paraffin-embedded Sections)

Image 2. Formalin fixed and paraffin embedded human pancreas tissue stained with MRPS12 followed by peroxidase conjugation of the secondary antibody and DAB staining.