

Datasheet for ABIN953523  
**anti-MS4A4A antibody (N-Term)**[Go to Product page](#)

## 2 Images

## Overview

Quantity:	0.4 mL
Target:	MS4A4A
Binding Specificity:	AA 40-68, N-Term
Reactivity:	Human
Host:	Rabbit
Clonality:	Polyclonal
Conjugate:	This MS4A4A antibody is un-conjugated
Application:	Western Blotting (WB), Flow Cytometry (FACS), Enzyme Immunoassay (EIA)

## Product Details

Immunogen:	KLH conjugated synthetic peptide between 40-68 amino acids from the N-terminal region of Human MS4A4A
Isotype:	Ig Fraction
Specificity:	This antibody recognizes Human MS4A4A (N-term).
Purification:	Protein A column, followed by peptide affinity purification

## Target Details

Target:	MS4A4A
Alternative Name:	MS4A4A ( <a href="#">MS4A4A Products</a> )
Background:	This gene encodes a member of the membrane-spanning 4A gene family. Members of this

## Target Details

nascent protein family are characterized by common structural features and similar intron/exon splice boundaries and display unique expression patterns among hematopoietic cells and nonlymphoid tissues. Alternative splicing of this gene results in several transcript variants, however, not all transcripts have been fully described. Synonyms: 4SPAN1, CD20 antigen-like 1, CD20L1, Four-span transmembrane protein 1, HDCME31P, MS4A4, Membrane-spanning 4-domains subfamily A member 4A

Molecular Weight: 25441 Da

Gene ID: 51338

NCBI Accession: [NP\\_076926](#)

## Application Details

Application Notes: Optimal working dilution should be determined by the investigator.

Restrictions: For Research Use only

## Handling

Format: Liquid

Concentration: 0.25 mg/mL

Buffer: PBS containing 0.09 % (W/V) Sodium Azide as preservative

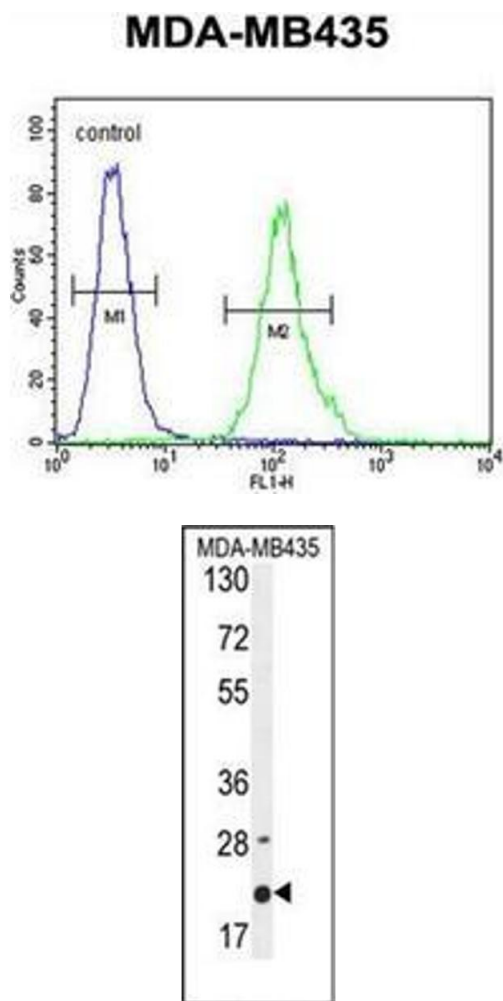
Preservative: Sodium azide

Precaution of Use: This product contains sodium azide: a POISONOUS AND HAZARDOUS SUBSTANCE which should be handled by trained staff only.

Handling Advice: Avoid repeated freezing and thawing.

Storage: 4 °C/-20 °C

Storage Comment: Store undiluted at 2-8 °C for one month or (in aliquots) at -20 °C for longer.



**Flow Cytometry**

**Image 1.** Flow cytometric analysis of MDA-MB435 cells using MS4A4A Antibody (N-term) Cat.-No AP52577PU-N (right histogram) compared to a negative control cell (left histogram). FITC-conjugated goat-anti-rabbit secondary antibodies were used for the analysis

**Western Blotting**

**Image 2.** Western blot analysis of MS4A4A Antibody (N-term) in MDA-MB435 cell line lysates (35ug/lane). This demonstrates the M4A4A antibody detected the M4A4A protein (arrow).