

Datasheet for ABIN953532
anti-MTG1 antibody (Middle Region)[Go to Product page](#)

1 Image

Overview

Quantity:	0.4 mL
Target:	MTG1
Binding Specificity:	AA 115-143, Middle Region
Reactivity:	Human
Host:	Rabbit
Clonality:	Polyclonal
Conjugate:	This MTG1 antibody is un-conjugated
Application:	Western Blotting (WB), Enzyme Immunoassay (EIA)

Product Details

Immunogen:	Synthetic peptide - KLH conjugated - corresponding to the central region (between 115-143aa) of human MTG1
Isotype:	Ig Fraction
Specificity:	This antibody recognizes human MTG1.
Purification:	Purified through a Protein A column followed by peptide affinity purification

Target Details

Target:	MTG1
Alternative Name:	MTG1 (MTG1 Products)
Background:	Mitochondrial GTPase 1 may be involved in assembly of the large ribosomal subunit (By

Target Details

	similarity).Synonyms: GTPBP7, Mitochondrial GTPase 1
Molecular Weight:	37237 Da
Gene ID:	92170
NCBI Accession:	NP_612393

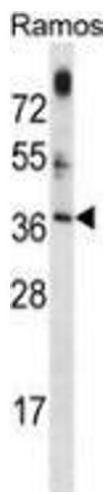
Application Details

Application Notes:	Optimal working dilution should be determined by the investigator.
Restrictions:	For Research Use only

Handling

Format:	Liquid
Concentration:	0.25 mg/mL
Buffer:	PBS with 0.09 % (W/V) Sodium azide
Preservative:	Sodium azide
Precaution of Use:	This product contains sodium azide: a POISONOUS AND HAZARDOUS SUBSTANCE which should be handled by trained staff only.
Handling Advice:	Avoid repeated freezing and thawing.
Storage:	4 °C/-20 °C
Storage Comment:	Store undiluted at 2-8 °C for one month or (in aliquots) at -20 °C for longer.

Images



Western Blotting

Image 1. Western blot analysis in Ramos cell line lysates (35ug/lane) using MTG1 Antibody . This demonstrates this antibody detected the MTG1 protein (arrow).