

Datasheet for ABIN953534
anti-MTHFD2L antibody (C-Term)



[Go to Product page](#)

1 Image

Overview

Quantity:	0.4 mL
Target:	MTHFD2L
Binding Specificity:	AA 223-252, C-Term
Reactivity:	Human
Host:	Rabbit
Clonality:	Polyclonal
Conjugate:	This MTHFD2L antibody is un-conjugated
Application:	Western Blotting (WB), Enzyme Immunoassay (EIA)

Product Details

Immunogen:	Synthetic peptide - KLH conjugated - corresponding to the C-terminal region (between 223-252aa) of human MTHFD2L
Isotype:	Ig Fraction
Specificity:	This antibody recognizes human MTHFD2L at C-term.
Purification:	Purified through a Protein A column followed by peptide affinity purification

Target Details

Target:	MTHFD2L
Alternative Name:	MTHFD2L (MTHFD2L Products)
Background:	Synonyms: NADP dependent, Probable bifunctional methylenetetrahydrofolate

Target Details

	dehydrogenase/cyclohydrolase 2
Molecular Weight:	31285 Da
Gene ID:	441024
NCBI Accession:	NP_001138450

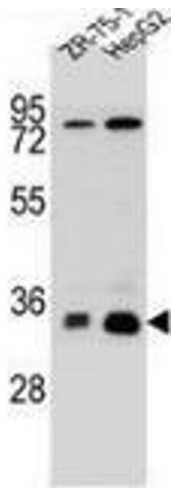
Application Details

Application Notes:	Optimal working dilution should be determined by the investigator.
Restrictions:	For Research Use only

Handling

Format:	Liquid
Concentration:	0.25 mg/mL
Buffer:	PBS with 0.09 % (W/V) Sodium azide
Preservative:	Sodium azide
Precaution of Use:	This product contains sodium azide: a POISONOUS AND HAZARDOUS SUBSTANCE which should be handled by trained staff only.
Handling Advice:	Avoid repeated freezing and thawing.
Storage:	4 °C/-20 °C
Storage Comment:	Store undiluted at 2-8 °C for one month or (in aliquots) at -20 °C for longer.

Images



Western Blotting

Image 1. Western blot analysis in HepG2,ZR-75-1 cell line lysates (35ug/lane) using MTHFD2L Antibody (C-term). This demonstrates this antibody detected the MTHFD2L protein (arrow).