

Datasheet for ABIN953552  
**anti-MUTYH antibody (Middle Region)**

## 3 Images

[Go to Product page](#)

## Overview

Quantity:	0.4 mL
Target:	MUTYH
Binding Specificity:	AA 352-381, Middle Region
Reactivity:	Human, Mouse
Host:	Rabbit
Clonality:	Polyclonal
Conjugate:	This MUTYH antibody is un-conjugated
Application:	Western Blotting (WB), Immunofluorescence (IF), Flow Cytometry (FACS), Enzyme Immunoassay (EIA)

## Product Details

Immunogen:	Synthetic peptide - KLH conjugated - corresponding to the central region (between 352-381aa) of human MUTYH.
Isotype:	Ig Fraction
Specificity:	This antibody recognizes MUTYH.
Cross-Reactivity (Details):	Species reactivity (tested): Human, Mouse
Purification:	Prepared by Saturated Ammonium Sulfate (SAS) precipitation followed by dialysis against PBS

## Target Details

Target:	MUTYH
---------	-------

## Target Details

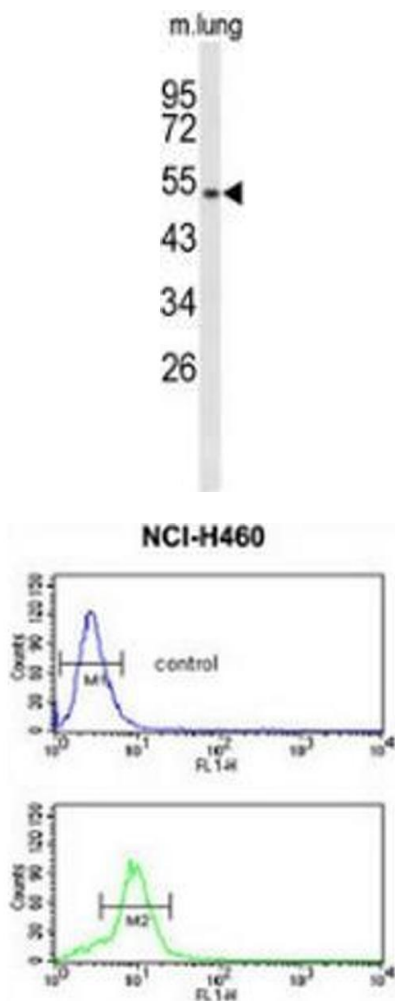
Alternative Name:	MUTYH ( <a href="#">MUTYH Products</a> )
Background:	MYH is the eukaryotic homolog to the E. coli protein MutY. It was first identified in HeLa cells and nicks DNA replication errors, specifically A/G mismatches. MYH is involved in oxidative DNA damage repair and initiates repair of A*oxoG to C*G by removing the inappropriately paired adenine base from the DNA backbone. It possesses both adenine and 2-OH-A DNA glycosylase activities.Synonyms: A/G-specific adenine DNA glycosylase, MYH, MutY homolog
Gene ID:	4595
NCBI Accession:	<a href="#">NP_001041636</a>
Pathways:	<a href="#">DNA Damage Repair</a>

## Application Details

Application Notes:	Optimal working dilution should be determined by the investigator.
Restrictions:	For Research Use only

## Handling

Format:	Liquid
Concentration:	0.25 mg/mL
Buffer:	PBS with 0.09 % (W/V) Sodium azide
Preservative:	Sodium azide
Precaution of Use:	This product contains sodium azide: a POISONOUS AND HAZARDOUS SUBSTANCE which should be handled by trained staff only.
Handling Advice:	Avoid repeated freezing and thawing.
Storage:	4 °C/-20 °C
Storage Comment:	Store undiluted at 2-8 °C for one month or (in aliquots) at -20 °C for longer.

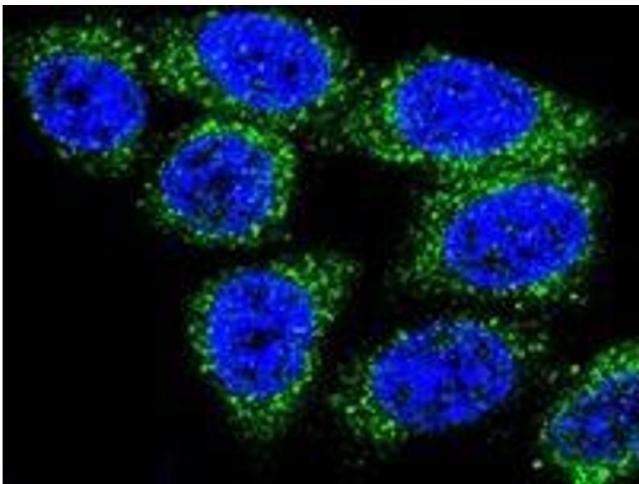


Western Blotting

**Image 1.** Western blot analysis of MUTYH (arrow) in mouse lung tissue lysates (35ug/lane) using MUTYH

Flow Cytometry

**Image 2.** Flow cytometric analysis of NCI-H460 cells (bottom histogram) compared to a negative control cell (top histogram) using MUTYH Antibody , followed by FITC-conjugated goat-anti-rabbit secondary antibodies.



Immunofluorescence

**Image 3.** Confocal immunofluorescent analysis of Hela cells using MUTYH Antibody , followed by Alexa Fluor® 488-conjugated goat anti-rabbit IgG (green). DAPI was used to stain the cell nuclear (blue).