

Datasheet for ABIN953557
anti-MYBPHL antibody (N-Term)[Go to Product page](#)

4 Images

Overview

| | |
|----------------------|---|
| Quantity: | 0.4 mL |
| Target: | MYBPHL |
| Binding Specificity: | AA 87-116, N-Term |
| Reactivity: | Human |
| Host: | Rabbit |
| Clonality: | Polyclonal |
| Conjugate: | This MYBPHL antibody is un-conjugated |
| Application: | Western Blotting (WB), Flow Cytometry (FACS), Immunofluorescence (IF), Immunohistochemistry (Paraffin-embedded Sections) (IHC (p)), Enzyme Immunoassay (EIA) |

Product Details

| | |
|---------------|--|
| Immunogen: | Synthetic peptide - KLH conjugated - corresponding to N-terminal region (between 87-116aa) of human MYBPHL |
| Isotype: | Ig Fraction |
| Specificity: | This antibody recognizes human MYBPHL. |
| Purification: | Purified through a Protein A column followed by peptide affinity purification |

Target Details

| | |
|-------------------|--|
| Target: | MYBPHL |
| Alternative Name: | MYBPHL (MYBPHL Products) |

Target Details

| | |
|-------------------|---|
| Background: | Synonyms: Myosin-binding protein H-like |
| Molecular Weight: | 38733 Da |
| Gene ID: | 343263 |
| NCBI Accession: | NP_001010985 |

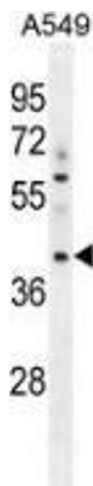
Application Details

| | |
|--------------------|--|
| Application Notes: | Optimal working dilution should be determined by the investigator. |
| Restrictions: | For Research Use only |

Handling

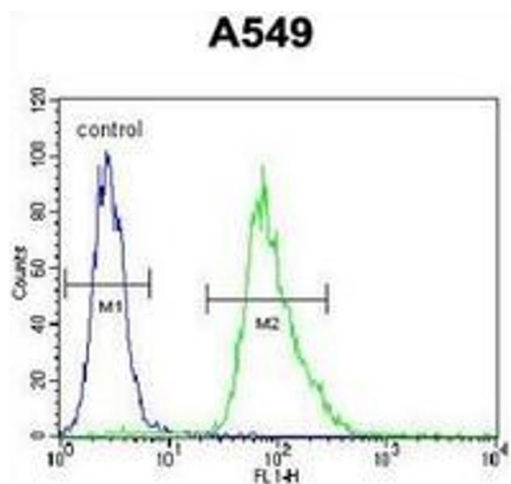
| | |
|--------------------|--|
| Format: | Liquid |
| Concentration: | 0.25 mg/mL |
| Buffer: | PBS with 0.09 % (W/V) Sodium azide |
| Preservative: | Sodium azide |
| Precaution of Use: | This product contains sodium azide: a POISONOUS AND HAZARDOUS SUBSTANCE which should be handled by trained staff only. |
| Handling Advice: | Avoid repeated freezing and thawing. |
| Storage: | 4 °C/-20 °C |
| Storage Comment: | Store undiluted at 2-8 °C for one month or (in aliquots) at -20 °C for longer. |

Images



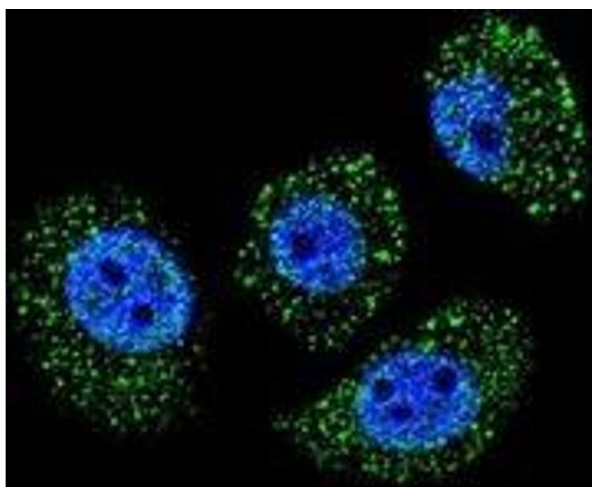
Western Blotting

Image 1. Western blot analysis in A549 cell line lysates (35ug/lane) using MYBPHL Antibody (N-term). This demonstrates this antibody detected the MYBPHL protein (arrow).



Flow Cytometry

Image 2. Flow cytometric analysis of A549 cells (right histogram) compared to a negative control cell (left histogram) using MYBPHL Antibody (N-term), followed by FITC-conjugated goat-anti-rabbit secondary antibodies.



Immunofluorescence

Image 3. Confocal immunofluorescent analysis of A549 cells using MYBPHL Antibody (N-term), followed by Alexa Fluor 488-conjugated goat anti-rabbit IgG (green). DAPI was used to stain the cell nuclear (blue).

Please check the [product details page](#) for more images. Overall 4 images are available for ABIN953557.