



Datasheet for ABIN953561
anti-Myc Target 1 antibody (C-Term)



[Go to Product page](#)

2 Images

Overview

Quantity:	0.4 mL
Target:	Myc Target 1 (MYCT1)
Binding Specificity:	AA 142-171, C-Term
Reactivity:	Human
Host:	Rabbit
Clonality:	Polyclonal
Conjugate:	This Myc Target 1 antibody is un-conjugated
Application:	Western Blotting (WB), Flow Cytometry (FACS), Enzyme Immunoassay (EIA)

Product Details

Immunogen:	Synthetic peptide - KLH conjugated - corresponding to the C-terminal region (between 142-171aa) of human MYCT1
Isotype:	Ig Fraction
Specificity:	This antibody recognizes human MYCT1 at C-term.
Purification:	Purified through a Protein A column followed by peptide affinity purification

Target Details

Target:	Myc Target 1 (MYCT1)
Alternative Name:	MYCT1 (MYCT1 Products)
Background:	MYCT1 may regulate certain MYC target genes, MYC seems to be a direct upstream

Target Details

transcriptional activator. Does not seem to significantly affect growth cell capacity.
Overexpression seems to mediate many of the known phenotypic features associated with MYC, including promotion of apoptosis, alteration of morphology, enhancement of anchorage-independent growth, tumorigenic conversion, promotion of genomic instability, and inhibition of hematopoietic differentiation (By similarity).Synonyms: MTLC, MTMC1, Myc target protein 1

Molecular Weight: 26593 Da

Gene ID: 80177

NCBI Accession: [NP_079383](#)

Application Details

Application Notes: Optimal working dilution should be determined by the investigator.

Restrictions: For Research Use only

Handling

Format: Liquid

Concentration: 0.25 mg/mL

Buffer: PBS with 0.09 % (W/V) Sodium azide

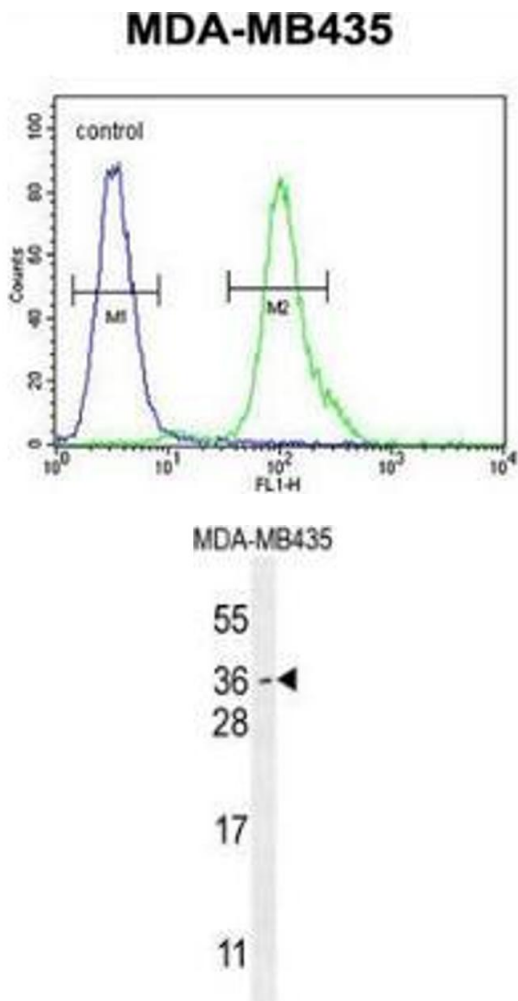
Preservative: Sodium azide

Precaution of Use: This product contains sodium azide: a POISONOUS AND HAZARDOUS SUBSTANCE which should be handled by trained staff only.

Handling Advice: Avoid repeated freezing and thawing.

Storage: 4 °C/-20 °C

Storage Comment: Store undiluted at 2-8 °C for one month or (in aliquots) at -20 °C for longer.



Flow Cytometry

Image 1. Flow cytometric analysis of MDA-MB435 cells (right histogram) compared to a negative control cell (left histogram) using MYCT1 Antibody (C-term), followed by FITC-conjugated goat-anti-rabbit secondary antibodies.

Western Blotting

Image 2. Western blot analysis in MDA-MB435 cell line lysates (35ug/lane) using MYCT1 Antibody (C-term). This demonstrates this antibody detected the MYCT1 protein (arrow).