

Datasheet for ABIN953563  
**anti-MBP antibody**



[Go to Product page](#)

2 Images

## Overview

Quantity:	0.1 mL
Target:	MBP
Reactivity:	Human, Mouse, Rat
Host:	Chicken
Clonality:	Polyclonal
Conjugate:	This MBP antibody is un-conjugated
Application:	Western Blotting (WB), Immunofluorescence (IF)

## Product Details

Immunogen:	Three peptide sequences conserved in higher vertebrate MBP proteins.
Isotype:	Ig Fraction
Specificity:	Specific for the ~18k & 22k myelin basic protein in Western blots of Rat brain homogenate.
Cross-Reactivity (Details):	Species reactivity (tested): Human, Bovine, Mouse and Rat.
Purification:	Ig Fraction

## Target Details

Target:	MBP
Alternative Name:	Myelin Basic Protein ( <a href="#">MBP Products</a> )
Background:	Myelin Basic Protein (MBP) is one of the major proteins of the myelin sheath surrounding axons in the nervous system. Since it is of relatively low molecular weight and high abundance the

## Target Details

protein sequence was determined from purified protein over 30 years ago (Eylar et al., 1971). The protein is made by oligodendrocytes in the central nervous system, so antibodies to MBP are good markers of this cell type. However, transcripts from the same gene are also expressed in certain hematopoietic lineage cells (Marty et al., 2002). In the central nervous system there are there different forms of the protein made by alternate transcription from a single gene, which have molecular weights of 21.5, 18.5, and 17.2 kDa. Since the two lower molecular weight forms are very close in molecular size, MBP antibodies typically show two bands on Western blots, one at about 22 kDa and another at about 18 kDa.Synonyms: MBP, Myelin membrane encephalitogenic protein

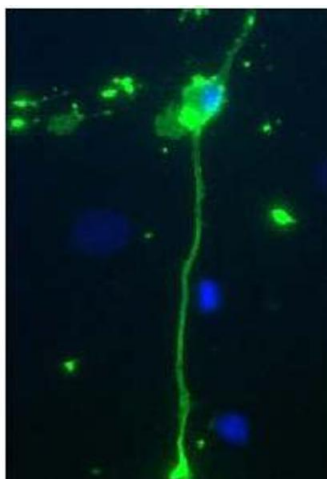
Gene ID:	4155
NCBI Accession:	<a href="#">NP_001020252</a>
UniProt:	<a href="#">P02686</a>

## Application Details

Application Notes:	Optimal working dilution should be determined by the investigator.
Restrictions:	For Research Use only

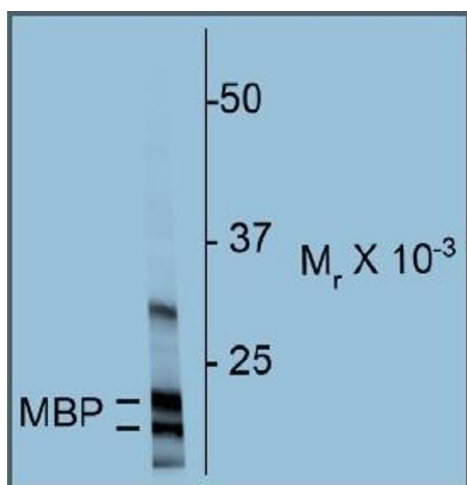
## Handling

Format:	Liquid
Handling Advice:	Avoid repeated freezing and thawing.
Storage:	-20 °C
Storage Comment:	Store the antibody undiluted (in aliquots) at -20 °C.



#### Immunofluorescence

**Image 1.** Rat mixed neuron/glia cultures stained with Chicken anti-MBP antibody (green). Blue is a DNA stain. Note that the MBP antibody stains an oligodendrocyte and some membrane shed from this cell. Other cells in the field include neurons, astrocytes, microglia and fibroblasts, all of which are completely negative.



#### Western Blotting

**Image 2.** Western blot of rat cortex homogenate showing specific immunolabeling of the ~18 & 22k MBP protein.