



Datasheet for ABIN953575  
**anti-Myosin XIX antibody (Middle Region)**



[Go to Product page](#)

2 Images

Overview

Quantity:	0.4 mL
Target:	Myosin XIX (MYO19)
Binding Specificity:	AA 561-589, Middle Region
Reactivity:	Human
Host:	Rabbit
Clonality:	Polyclonal
Conjugate:	This Myosin XIX antibody is un-conjugated
Application:	Western Blotting (WB), Flow Cytometry (FACS), Enzyme Immunoassay (EIA)

Product Details

Immunogen:	Synthetic peptide - KLH conjugated - corresponding to the central region (between 561-589aa) of human MYO19.
Isotype:	Ig Fraction
Specificity:	This antibody recognizes human MYO19.
Purification:	Purified through a Protein A column followed by peptide affinity purification

Target Details

Target:	Myosin XIX (MYO19)
Alternative Name:	MYO19 ( <a href="#">MYO19 Products</a> )
Background:	Probable S-adenosyl-L-methionine-dependent methyltransferase that catalyzes the formation

## Target Details

---

of 5-methyl-uridine at position 54 (M-5-U54) in all tRNA. May also have a role in tRNA stabilization or maturation (By similarity).Synonyms: MYOHD1, Myosin head domain-containing protein 1, Myosin-XIX

Molecular Weight: 109135 Da

Gene ID: 80179

NCBI Accession: [NP\\_001028752](#)

## Application Details

---

Application Notes: Optimal working dilution should be determined by the investigator.

Restrictions: For Research Use only

## Handling

---

Format: Liquid

Concentration: 0.25 mg/mL

Buffer: PBS with 0.09 % (W/V) Sodium azide

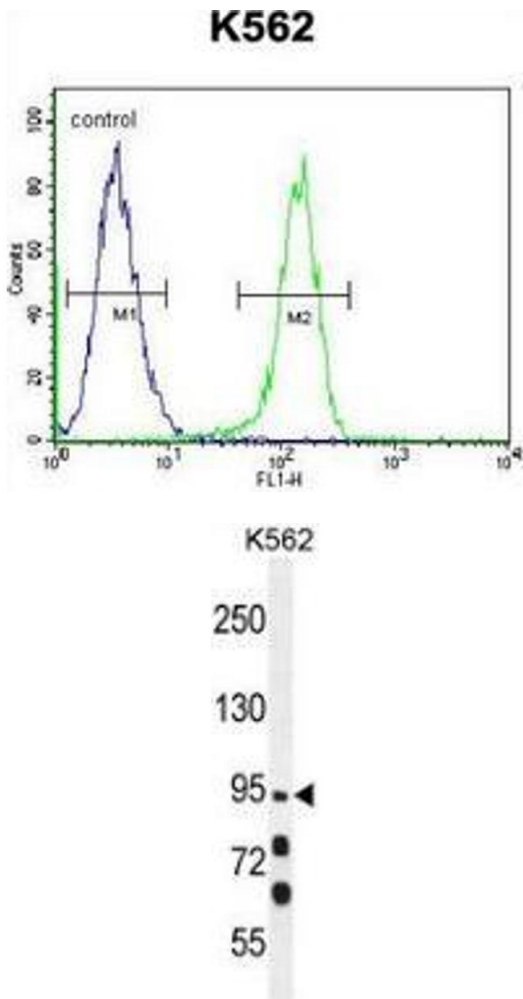
Preservative: Sodium azide

Precaution of Use: This product contains sodium azide: a POISONOUS AND HAZARDOUS SUBSTANCE which should be handled by trained staff only.

Handling Advice: Avoid repeated freezing and thawing.

Storage: 4 °C/-20 °C

Storage Comment: Store undiluted at 2-8 °C for one month or (in aliquots) at -20 °C for longer.



### Flow Cytometry

**Image 1.** Flow cytometric analysis of K562 cells (right histogram) compared to a negative control cell (left histogram) using MYO19 Antibody , followed by FITC-conjugated goat-anti-rabbit secondary antibodies.

### Western Blotting

**Image 2.** Western blot analysis in K562 cell line lysates (35ug/lane) using MYO19 Antibody . This demonstrates this antibody detected the MYO19 protein (arrow).