

Datasheet for ABIN953599

anti-NAP1L5 antibody (Middle Region)[Go to Product page](#)**1** Image

Overview

Quantity:	0.4 mL
Target:	NAP1L5
Binding Specificity:	AA 89-119, Middle Region
Reactivity:	Human, Mouse
Host:	Rabbit
Clonality:	Polyclonal
Conjugate:	This NAP1L5 antibody is un-conjugated
Application:	Western Blotting (WB), Enzyme Immunoassay (EIA)

Product Details

Immunogen:	KLH conjugated synthetic peptide between 89~119 amino acids from the Central region of Human NP1L5 Genename: NAP1L5
Isotype:	Ig Fraction
Specificity:	This antibody recognizes Human and Mouse NP1L5
Purification:	Affinity Chromatography on Protein A

Target Details

Target:	NAP1L5
Alternative Name:	NAP1L5 (NAP1L5 Products)
Background:	Synonyms: Nucleosome assembly protein 1-like 5

Target Details

Molecular Weight:	19593 Da
Gene ID:	266812
NCBI Accession:	NP_715638

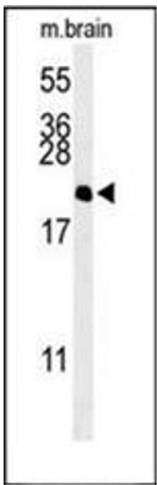
Application Details

Application Notes:	Optimal working dilution should be determined by the investigator.
Restrictions:	For Research Use only

Handling

Format:	Liquid
Concentration:	0.25 mg/mL
Buffer:	PBS, 0.09 % Sodium Azide
Preservative:	Sodium azide
Precaution of Use:	This product contains sodium azide: a POISONOUS AND HAZARDOUS SUBSTANCE which should be handled by trained staff only.
Handling Advice:	Avoid repeated freezing and thawing.
Storage:	4 °C/-20 °C
Storage Comment:	Store undiluted at 2-8 °C for one month or (in aliquots) at -20 °C for longer.

Images



Western Blotting

Image 1. Western blot analysis of NP1L5 Antibody (Center) in Mouse brain tissue lysates (35ug/lane). NP1L5 (arrow) was detected using the purified Pab.