

Datasheet for ABIN953601  
**anti-NAPG antibody (Middle Region)**[Go to Product page](#)

## 1 Image

## Overview

Quantity:	0.4 mL
Target:	NAPG
Binding Specificity:	AA 161-190, Middle Region
Reactivity:	Human
Host:	Rabbit
Clonality:	Polyclonal
Conjugate:	This NAPG antibody is un-conjugated
Application:	Western Blotting (WB), Enzyme Immunoassay (EIA)

## Product Details

Immunogen:	KLH conjugated synthetic peptide between 161-190 amino acids from the Central region of human NAPG
Isotype:	Ig Fraction
Specificity:	This antibody recognizes Human NAPG (Center).
Purification:	Protein A column, followed by peptide affinity purification

## Target Details

Target:	NAPG
Alternative Name:	NAPG ( <a href="#">NAPG Products</a> )
Background:	This gene encodes soluble NSF attachment protein gamma. The soluble NSF attachment

## Target Details

proteins (SNAPs) enable N-ethyl-maleimide-sensitive fusion protein (NSF) to bind to target membranes. NSF and SNAPs appear to be general components of the intracellular membrane fusion apparatus, and their action at specific sites of fusion must be controlled by SNAP receptors particular to the membranes being fused. The product of this gene mediates platelet exocytosis and controls the membrane fusion events of this process. Synonyms: Gamma-soluble NSF attachment protein, SNAPG

Molecular Weight: 34746 Da

Gene ID: 8774

NCBI Accession: [NP\\_003817](#)

## Application Details

Application Notes: Optimal working dilution should be determined by the investigator.

Restrictions: For Research Use only

## Handling

Format: Liquid

Concentration: 0.25 mg/mL

Buffer: PBS containing 0.09 % (W/V) Sodium Azide as preservative

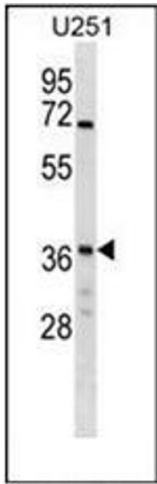
Preservative: Sodium azide

Precaution of Use: This product contains sodium azide: a POISONOUS AND HAZARDOUS SUBSTANCE which should be handled by trained staff only.

Handling Advice: Avoid repeated freezing and thawing.

Storage: 4 °C/-20 °C

Storage Comment: Store undiluted at 2-8 °C for one month or (in aliquots) at -20 °C for longer.



Western Blotting

**Image 1.** Western blot analysis of NAPG Antibody