

Datasheet for ABIN953609
anti-NAT5 antibody (C-Term)[Go to Product page](#)

1 Image

Overview

Quantity:	0.4 mL
Target:	NAT5
Binding Specificity:	AA 126-155, C-Term
Reactivity:	Human
Host:	Rabbit
Clonality:	Polyclonal
Conjugate:	This NAT5 antibody is un-conjugated
Application:	Western Blotting (WB), Enzyme Immunoassay (EIA)

Product Details

Immunogen:	KLH conjugated synthetic peptide between 126-155 amino acids from the C-terminal region of human NAT5
Isotype:	Ig Fraction
Specificity:	This antibody recognizes Human NAT5 (C-term).
Purification:	Protein A column, followed by peptide affinity purification

Target Details

Target:	NAT5
Alternative Name:	NAT5 (NAT5 Products)
Background:	NAT5 is a component of N-acetyltransferase complex B (NatB). Human NatB performs

Target Details

cotranslational N(alpha)-terminal acetylation of methionine residues when they are followed by asparagine (Starheim et al., 2008 [PubMed 18570629]).[supplied by OMIM].Synonyms: N-alpha-acetyltransferase 20, NAA20, NatB catalytic subunit

Molecular Weight: 20368 Da

Gene ID: 51126

NCBI Accession: [NP_852669](#)

Application Details

Application Notes: Optimal working dilution should be determined by the investigator.

Restrictions: For Research Use only

Handling

Format: Liquid

Concentration: 0.25 mg/mL

Buffer: PBS containing 0.09 % (W/V) Sodium Azide as preservative

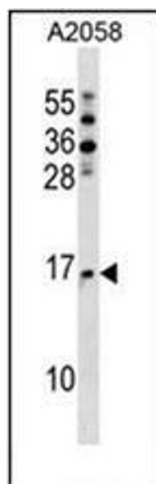
Preservative: Sodium azide

Precaution of Use: This product contains sodium azide: a POISONOUS AND HAZARDOUS SUBSTANCE which should be handled by trained staff only.

Handling Advice: Avoid repeated freezing and thawing.

Storage: 4 °C/-20 °C

Storage Comment: Store undiluted at 2-8 °C for one month or (in aliquots) at -20 °C for longer.



Western Blotting

Image 1. Western blot analysis of NAT5 Antibody (C-term) in A2058 cell line lysates (35ug/lane). This demonstrates the NAT5 antibody detected the NAT5 protein (arrow).