

Datasheet for ABIN953612
anti-NBPF8 antibody (N-Term)

2 Images

[Go to Product page](#)

Overview

Quantity:	0.4 mL
Target:	NBPF8
Binding Specificity:	AA 37-66, N-Term
Reactivity:	Human
Host:	Rabbit
Clonality:	Polyclonal
Conjugate:	This NBPF8 antibody is un-conjugated
Application:	Western Blotting (WB), Immunohistochemistry (Paraffin-embedded Sections) (IHC (p)), Enzyme Immunoassay (EIA)

Product Details

Immunogen:	KLH conjugated synthetic peptide between 37-66 amino acids from the N-terminal region of human NBPF8
Isotype:	Ig Fraction
Purification:	Protein A column, followed by peptide affinity purification

Target Details

Target:	NBPF8
Alternative Name:	NBPF8 (NBPF8 Products)
Background:	Synonyms: Neuroblastoma breakpoint family member 8

Target Details

Molecular Weight: 99215 Da

Gene ID: 9606

Application Details

Application Notes: Optimal working dilution should be determined by the investigator.

Restrictions: For Research Use only

Handling

Format: Liquid

Concentration: 0.25 mg/mL

Buffer: PBS containing 0.09 % (W/V) Sodium Azide as preservative

Preservative: Sodium azide

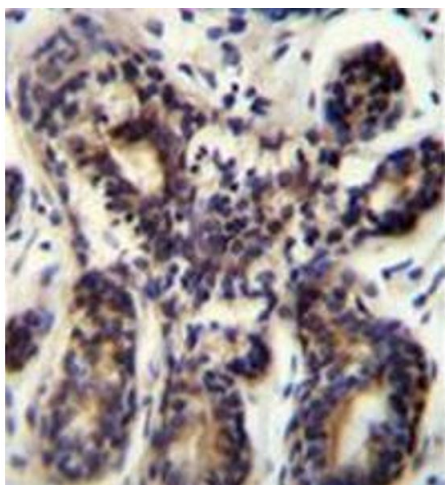
Precaution of Use: This product contains sodium azide: a POISONOUS AND HAZARDOUS SUBSTANCE which should be handled by trained staff only.

Handling Advice: Avoid repeated freezing and thawing.

Storage: 4 °C/-20 °C

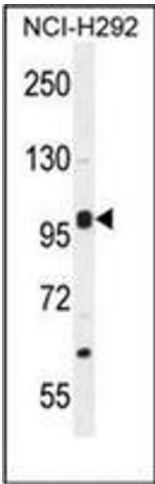
Storage Comment: Store undiluted at 2-8 °C for one month or (in aliquots) at -20 °C for longer.

Images



Immunohistochemistry (Paraffin-embedded Sections)

Image 1. Immunohistochemistry analysis in formalin fixed and paraffin embedded human breast tissue reacted with AP52820PU-N, which was peroxidase conjugated to the secondary antibody and followed by DAB staining.



Western Blotting

Image 2. Western blot analysis of NBPF8 Antibody (N-term) in NCI-H292 cell line lysates (35ug/lane). This demonstrates the NBPF8 antibody detected the NBPF8 protein (arrow).