

Datasheet for ABIN953620  
**anti-MT-ND3 antibody (N-Term)**[Go to Product page](#)

## 2 Images

## Overview

|                      |  |
|----------------------|--|
| Quantity:            | 0.4 mL   |
| Target:              | MT-ND3   |
| Binding Specificity: | AA 9-39, N-Term  |
| Reactivity:          | Human  |
| Host:                | Rabbit   |
| Clonality:           | Polyclonal   |
| Conjugate:           | This MT-ND3 antibody is un-conjugated                                  |
| Application:         | Western Blotting (WB), Flow Cytometry (FACS), Enzyme Immunoassay (EIA) |

## Product Details

|               |   |
|---------------|---|
| Immunogen:    | KLH conjugated synthetic peptide between 9-39 amino acids from the N-terminal region of human ND3 |
| Isotype:      | Ig Fraction   |
| Specificity:  | This antibody recognizes Human ND3 (N-term).  |
| Purification: | Protein A column, followed by peptide affinity purification                                       |

## Target Details

|                   |  |
|-------------------|--|
| Target:           | MT-ND3   |
| Alternative Name: | ND3 ( <a href="#">MT-ND3 Products</a> )  |
| Background:       | Core subunit of the mitochondrial membrane respiratory chain NADH dehydrogenase (Complex |

## Target Details

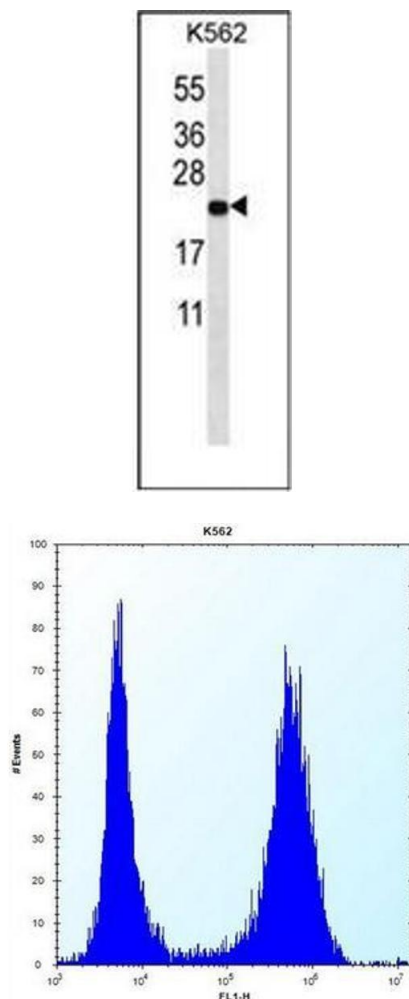
|                   |   |
|-------------------|---|
|                   | l) that is believed to belong to the minimal assembly required for catalysis. Complex I functions in the transfer of electrons from NADH to the respiratory chain. The immediate electron acceptor for the enzyme is believed to be ubiquinone (By similarity).Synonyms: MT, MT-, NADH-ubiquinone oxidoreductase chain 3, NADH3 |
| Molecular Weight: | 13186 Da  |
| Gene ID:          | 4537  |
| NCBI Accession:   | <a href="#">YP_003024033</a>  |

## Application Details

|                    |  |
|--------------------|--|
| Application Notes: | Optimal working dilution should be determined by the investigator. |
| Restrictions:      | For Research Use only  |

## Handling

|                    |  |
|--------------------|--|
| Format:            | Liquid   |
| Concentration:     | 0.25 mg/mL   |
| Buffer:            | PBS containing 0.09 % (W/V) Sodium Azide as preservative   |
| Preservative:      | Sodium azide   |
| Precaution of Use: | This product contains sodium azide: a POISONOUS AND HAZARDOUS SUBSTANCE which should be handled by trained staff only. |
| Handling Advice:   | Avoid repeated freezing and thawing.   |
| Storage:           | 4 °C/-20 °C  |
| Storage Comment:   | Store undiluted at 2-8 °C for one month or (in aliquots) at -20 °C for longer.   |



### Western Blotting

**Image 1.** Western blot analysis of ND3 Antibody (N-term) in K562 cell line lysates (35ug/lane).

This demonstrates the ND3 antibody detected the ND3 protein (arrow).

### Flow Cytometry

**Image 2.** Flow cytometric analysis of K562 cells using ND3 Antibody (N-term) Cat.-No AP52831PU-N (right histogram) compared to a negative control cell (left histogram). FITC-conjugated donkey-anti-rabbit secondary antibodies were used for the analysis.