

Datasheet for ABIN953628
anti-NDUFA10 antibody (Middle Region)

3 Images

[Go to Product page](#)

Overview

Quantity:	0.4 mL
Target:	NDUFA10
Binding Specificity:	AA 259-289, Middle Region
Reactivity:	Human, Mouse
Host:	Rabbit
Clonality:	Polyclonal
Conjugate:	This NDUFA10 antibody is un-conjugated
Application:	Western Blotting (WB), Flow Cytometry (FACS), Immunohistochemistry (Paraffin-embedded Sections) (IHC (p))

Product Details

Immunogen:	KLH conjugated synthetic peptide between 259~289 amino acids from the Central region of human NDUFA10
Isotype:	Ig Fraction
Specificity:	This antibody recognizes Human and Mouse NDUFA10 (Center).
Purification:	Protein A column, followed by peptide affinity purification

Target Details

Target:	NDUFA10
Alternative Name:	NDUFA10 (NDUFA10 Products)

Target Details

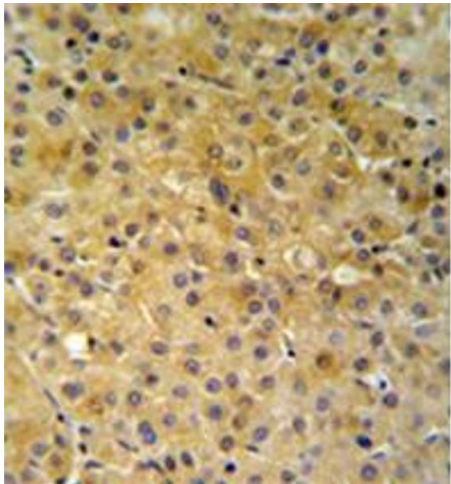
Background:	The protein encoded by this gene belongs to the complex I 42kDA subunit family. Mammalian complex I is the first enzyme complex in the electron transport chain of mitochondria. It is composed of 45 different subunits. This protein is a component of the hydrophobic protein fraction and has NADH dehydrogenase activity and oxidoreductase activity. It transfers electrons from NADH to the respiratory chain.Synonyms: NADH dehydrogenase [ubiquinone] 1 alpha subcomplex subunit 10, mitochondrial, mitochondrial NDUFA10
Molecular Weight:	40751 Da
Gene ID:	4705
NCBI Accession:	NP_004535

Application Details

Application Notes:	Optimal working dilution should be determined by the investigator.
Restrictions:	For Research Use only

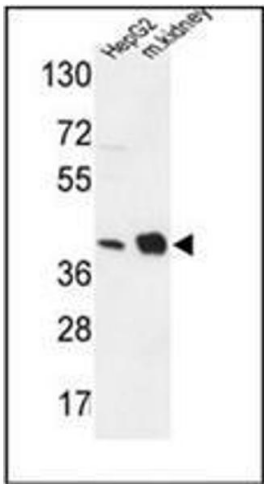
Handling

Format:	Liquid
Concentration:	0.25 mg/mL
Buffer:	PBS containing 0.09 % (W/V) Sodium Azide as preservative
Preservative:	Sodium azide
Precaution of Use:	This product contains sodium azide: a POISONOUS AND HAZARDOUS SUBSTANCE which should be handled by trained staff only.
Handling Advice:	Avoid repeated freezing and thawing.
Storage:	4 °C/-20 °C
Storage Comment:	Store undiluted at 2-8 °C for one month or (in aliquots) at -20 °C for longer.



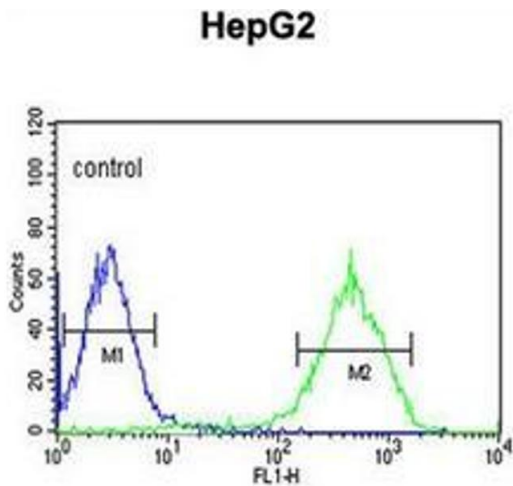
Immunohistochemistry (Paraffin-embedded Sections)

Image 1. Immunohistochemistry analysis in formalin fixed and paraffin embedded hepatocarcinoma reacted with NDUF10 Antibody (Center) followed which was followed by peroxidase conjugated to the secondary antibody and DAB staining. This data demonstrates the use of the NDUF10 Antibody (Center) for immunohistochemistry. Clinical relevance has not been evaluated.



Western Blotting

Image 2. Western blot analysis of NDUF10 Antibody (Center) in HepG2 cell line and mouse kidney tissue lysates (35ug/lane). This demonstrates the NDUF10 antibody detected the NDUF10 protein (arrow).



Flow Cytometry

Image 3. Flow cytometric analysis of HepG2 cells using NDUF10 Antibody (Center) Cat.No AP52837PU-N (right histogram) compared to a negative control cell (left histogram). FITC-conjugated goat-anti-rabbit secondary antibodies were used for the analysis.