

Datasheet for ABIN953650
anti-NPHP3 antibody (N-Term)

2 Images

[Go to Product page](#)

Overview

Quantity:	0.4 mL
Target:	NPHP3
Binding Specificity:	AA 151-181, N-Term
Reactivity:	Human
Host:	Rabbit
Clonality:	Polyclonal
Conjugate:	This NPHP3 antibody is un-conjugated
Application:	Western Blotting (WB), Enzyme Immunoassay (EIA)

Product Details

Immunogen:	KLH conjugated synthetic peptide between 151-181 amino acids from the N-terminal region of human NPHP3
Isotype:	Ig Fraction
Specificity:	This antibody reacts to NPHP3.
Cross-Reactivity (Details):	Species reactivity (tested):Human.
Purification:	Affinity chromatography on Protein A

Target Details

Target:	NPHP3
Alternative Name:	Nephrocystin 3 (NPHP3 Products)

Target Details

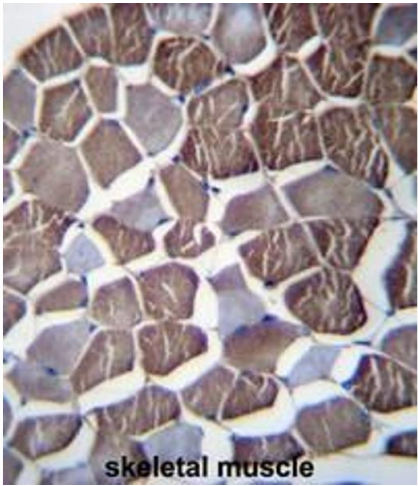
Background:	This gene encodes a protein containing a coiled-coil (CC) domain, a tubulin-tyrosine ligase (TTL) domain, and a tetratrico peptide repeat (TPR) domain. The encoded protein interacts with nephrocystin and may function in renal tubular development and function. Mutations in this gene are associated with nephronophthisis type 3. Multiple splice variants have been described but their full-length nature has not been determined.Synonyms: KIAA2000, NPHP3
Molecular Weight:	71kd Isoform 3. 150864 Da
Gene ID:	27031
NCBI Accession:	NP_694972
Pathways:	cAMP Metabolic Process

Application Details

Application Notes:	Optimal working dilution should be determined by the investigator.
Restrictions:	For Research Use only

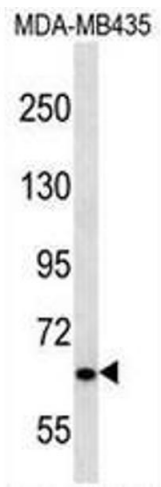
Handling

Format:	Liquid
Concentration:	0.25 mg/mL
Buffer:	PBS, 0.09 % (W/V) sodium azide
Preservative:	Sodium azide
Precaution of Use:	This product contains sodium azide: a POISONOUS AND HAZARDOUS SUBSTANCE which should be handled by trained staff only.
Handling Advice:	Avoid repeated freezing and thawing.
Storage:	4 °C/-20 °C
Storage Comment:	Store the antibody undiluted at 2-8 °C for one month or (in aliquots) at -20 °C for longer.



Immunohistochemistry (Paraffin-embedded Sections)

Image 1. NPHP3 Antibody (N-term) immunohistochemistry analysis in formalin fixed and paraffin embedded human skeletal muscle followed by peroxidase conjugation of the secondary antibody and DAB staining. This data demonstrates the use of NPHP3 Antibody (N-term) for immunohistochemistry. Clinical relevance has not been evaluated.



Western Blotting

Image 2. NPHP3 Antibody (N-term) western blot analysis in MDA-MB435 cell line lysates (35µg/lane). This demonstrates the NPHP3 antibody detected the NPHP3 protein (arrow).