



[Go to Product page](#)

Datasheet for ABIN953651

## anti-Nesprin3 antibody (C-Term)

### 2 Images

#### Overview

Quantity:	0.4 mL
Target:	Nesprin3 (C14orf49)
Binding Specificity:	AA 855-884, C-Term
Reactivity:	Human, Mouse
Host:	Rabbit
Clonality:	Polyclonal
Conjugate:	This Nesprin3 antibody is un-conjugated
Application:	Western Blotting (WB), Immunohistochemistry (Paraffin-embedded Sections) (IHC (p)), Enzyme Immunoassay (EIA)

#### Product Details

Immunogen:	KLH conjugated synthetic peptide between 855-884 amino acids from the C-terminal region of human SYNE3
Isotype:	Ig Fraction
Specificity:	This antibody reacts tp SYNE3.
Cross-Reactivity (Details):	Species reactivity (tested):Human and Mouse.
Purification:	Affinity chromatography on Protein A

#### Target Details

Target:	Nesprin3 (C14orf49)
---------	---------------------

## Target Details

---

Alternative Name:	Nesprin-3 ( <a href="#">C14orf49 Products</a> )
Background:	Component of SUN-protein-containing multivariate complexes also called LINC complexes which link the nucleoskeleton and cytoskeleton by providing versatile outer nuclear membrane attachment sites for cytoskeletal filaments. Involved in the maintenance of nuclear organization and structural integrity. Probable anchoring protein which tethers the nucleus to the cytoskeleton by binding PLEC which can associate with the intermediate filament system.Synonyms: C14orf49
Molecular Weight:	112216 Da
Gene ID:	161176
NCBI Accession:	<a href="#">NP_689805</a>
Pathways:	<a href="#">Maintenance of Protein Location</a>

## Application Details

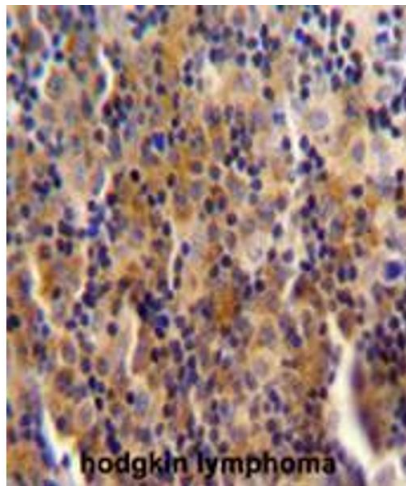
---

Application Notes:	Optimal working dilution should be determined by the investigator.
Restrictions:	For Research Use only

## Handling

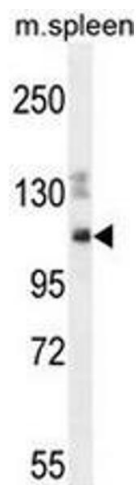
---

Format:	Liquid
Concentration:	0.25 mg/mL
Buffer:	PBS, 0.09 % (W/V) sodium azide
Preservative:	Sodium azide
Precaution of Use:	This product contains sodium azide: a POISONOUS AND HAZARDOUS SUBSTANCE which should be handled by trained staff only.
Handling Advice:	Avoid repeated freezing and thawing.
Storage:	4 °C/-20 °C
Storage Comment:	Store the antibody undiluted at 2-8 °C for one month or (in aliquots) at -20 °C for longer.



### Immunohistochemistry (Paraffin-embedded Sections)

**Image 1.** SYNE3 antibody (C-term) immunohistochemistry analysis in formalin fixed and paraffin embedded human hodgkin lymphoma followed by peroxidase conjugation of the secondary antibody and DAB staining. This data demonstrates the use of SYNE3 antibody (C-term) for immunohistochemistry. Clinical relevance has not been evaluated.



### Western Blotting

**Image 2.** SYNE3 Antibody (C-term) western blot analysis in mouse spleen cell line lysates (35µg/lane). This demonstrates the SYNE3 antibody detected the SYNE3 protein (arrow).