

Datasheet for ABIN953653
anti-DCC antibody (Middle Region)

2 Images

[Go to Product page](#)

Overview

Quantity:	0.4 mL
Target:	DCC
Binding Specificity:	AA 642-670, Middle Region
Reactivity:	Human, Mouse
Host:	Rabbit
Clonality:	Polyclonal
Conjugate:	This DCC antibody is un-conjugated
Application:	Western Blotting (WB), Immunohistochemistry (Paraffin-embedded Sections) (IHC (p)), Enzyme Immunoassay (EIA)

Product Details

Immunogen:	KLH conjugated synthetic peptide between 642-670 amino acids from the Central region of Human DCC. Genename: DCC
Isotype:	Ig Fraction
Specificity:	This antibody recognizes Human and Mouse DCC (Center).
Purification:	Affinity Chromatography on Protein A

Target Details

Target:	DCC
Alternative Name:	Netrin Receptor DCC (DCC Products)

Target Details

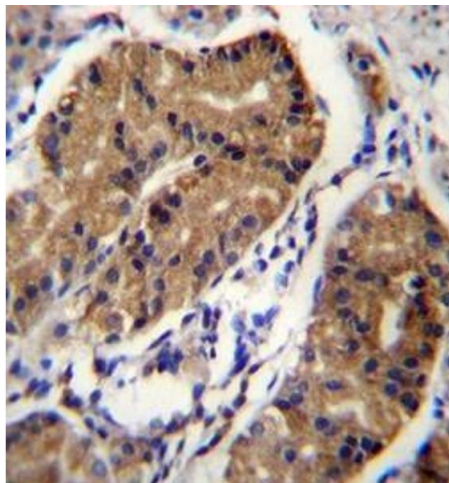
Background:	This gene encodes a netrin 1 receptor. The transmembrane protein is a member of the immunoglobulin superfamily of cell adhesion molecules, and mediates axon guidance of neuronal growth cones towards sources of netrin 1 ligand. The cytoplasmic tail interacts with the tyrosine kinases Src and focal adhesion kinase (FAK, also known as PTK2) to mediate axon attraction. The protein partially localizes to lipid rafts, and induces apoptosis in the absence of ligand. The protein functions as a tumor suppressor, and is frequently mutated or downregulated in colorectal cancer and esophageal carcinoma.Synonyms: CRC18, CRCR1, Colorectal cancer suppressor, IGDC1, Immunoglobulin superfamily DCC subclass member 1, Tumor suppressor protein DCC
Molecular Weight:	158457 Da
Gene ID:	1630
NCBI Accession:	NP_005206
Pathways:	Regulation of Cell Size

Application Details

Application Notes:	Optimal working dilution should be determined by the investigator.
Restrictions:	For Research Use only

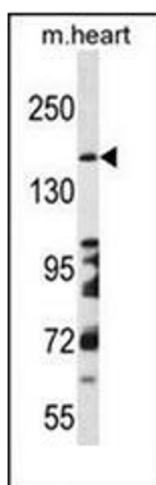
Handling

Format:	Liquid
Concentration:	0.25 mg/mL
Buffer:	PBS, 0.09 % Sodium Azide
Preservative:	Sodium azide
Precaution of Use:	This product contains sodium azide: a POISONOUS AND HAZARDOUS SUBSTANCE which should be handled by trained staff only.
Handling Advice:	Avoid repeated freezing and thawing.
Storage:	4 °C/-20 °C
Storage Comment:	Store undiluted at 2-8 °C for one month or (in aliquots) at -20 °C for longer.



Immunohistochemistry (Paraffin-embedded Sections)

Image 1. Formalin fixed and paraffin embedded human stomach tissue stained with Netrin receptor DCC Antibody followed by peroxidase conjugation of the secondary antibody and DAB staining.



Western Blotting

Image 2. Western blot analysis of Netrin receptor DCC Antibody in Mouse heart tissue lysates (35ug/lane). This demonstrates the DCC antibody detected the DCC protein (arrow).