

Datasheet for ABIN953661

anti-Neurexophilin 4 antibody (C-Term)**2** Images[Go to Product page](#)

Overview

Quantity:	0.4 mL
Target:	Neurexophilin 4 (NXPH4)
Binding Specificity:	AA 226-255, C-Term
Reactivity:	Human
Host:	Rabbit
Clonality:	Polyclonal
Conjugate:	This Neurexophilin 4 antibody is un-conjugated
Application:	Western Blotting (WB), Flow Cytometry (FACS), Enzyme Immunoassay (EIA)

Product Details

Immunogen:	KLH conjugated synthetic peptide between 226-255 amino acids from the C-terminal region of Human Neurexophilin-4 Genename: NXPH4
Isotype:	Ig Fraction
Specificity:	This antibody recognizes Human Neurexophilin-4 (C-term).
Purification:	Protein A column, followed by peptide affinity purification

Target Details

Target:	Neurexophilin 4 (NXPH4)
Alternative Name:	Neurexophilin-4 (NXPH4 Products)
Background:	An adhesion molecule that interacts with extracellular matrix molecules in developing teeth and

Target Details

may play important roles in differentiation and maintenance of odontoblasts as well as in dentin formation (By similarity).Synonyms: NPH4, NXPH4

Molecular Weight: 33065 Da

Gene ID: 11247

NCBI Accession: [NP_009155](#)

Application Details

Application Notes: Optimal working dilution should be determined by the investigator.

Restrictions: For Research Use only

Handling

Format: Liquid

Concentration: 0.25 mg/mL

Buffer: PBS containing 0.09 % (W/V) Sodium Azide as preservative

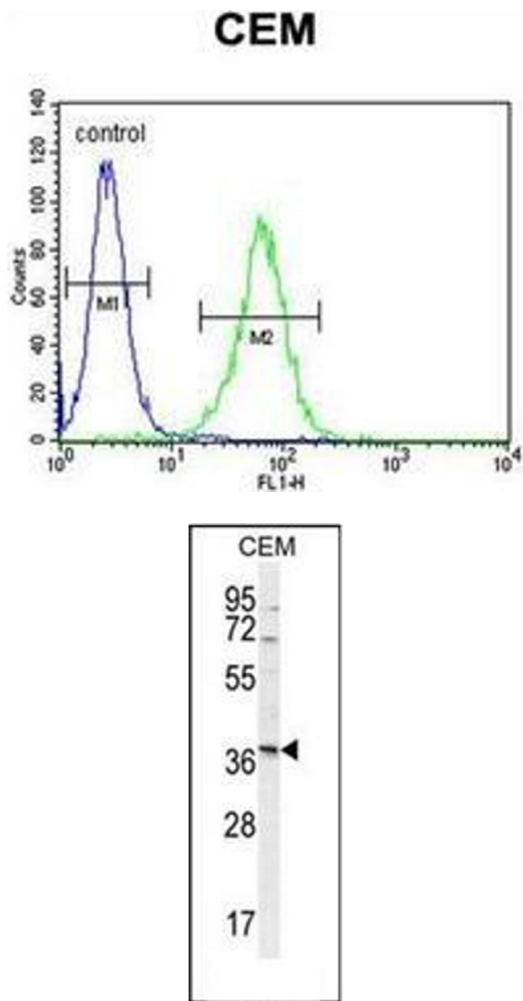
Preservative: Sodium azide

Precaution of Use: This product contains sodium azide: a POISONOUS AND HAZARDOUS SUBSTANCE which should be handled by trained staff only.

Handling Advice: Avoid repeated freezing and thawing.

Storage: 4 °C/-20 °C

Storage Comment: Store undiluted at 2-8 °C for one month or (in aliquots) at -20 °C for longer.



Flow Cytometry

Image 1. Flow cytometric analysis of CEM cells using Neurexophilin-4 Antibody (C-term) Cat.-No AP52980PU-N (right histogram) compared to a negative control cell (left histogram). FITC-conjugated goat-anti-rabbit secondary antibodies were used for the analysis.

Western Blotting

Image 2. Western blot analysis of Neurexophilin-4 Antibody (C-term) in CEM cell line lysates (35ug/lane). This demonstrates the NXPH4 antibody detected the NXPH4 protein (arrow).