

Datasheet for ABIN953678

anti-NPY antibody**2** Images[Go to Product page](#)

Overview

Quantity:	50 µg
Target:	NPY
Reactivity:	Human
Host:	Mouse
Clonality:	Monoclonal
Conjugate:	This NPY antibody is un-conjugated
Application:	Western Blotting (WB), Immunohistochemistry (Paraffin-embedded Sections) (IHC (p)), Enzyme Immunoassay (EIA)

Product Details

Immunogen:	Recombinant protein.
Clone:	3H2
Isotype:	IgG1
Specificity:	This antibody recognizes NPY / Neuropeptide Y
Cross-Reactivity (Details):	Species reactivity (tested):Human.
Purification:	Protein A Chromatography

Target Details

Target:	NPY
Alternative Name:	Neuropeptide Y / NPY (NPY Products)

Target Details

Background: Neuropeptide Y (NPY) is a peptide belonging to the PP-family and occurs in neurons and adrenal medullary cells. The brain contains large quantities of NPY and it is also found in the peripheral nervous system, where it coexists with noradrenaline in sympathetic fibers. NPY inhibits gut motility and causes vasoconstriction. Pheochromocytomas contain NPY.

Gene ID: 4852

NCBI Accession: [NP_000896](#)

UniProt: [P01303](#)

Pathways: [Feeding Behaviour](#)

Application Details

Application Notes: Optimal working dilution should be determined by the investigator.

Restrictions: For Research Use only

Handling

Concentration: 1.0 mg/mL.

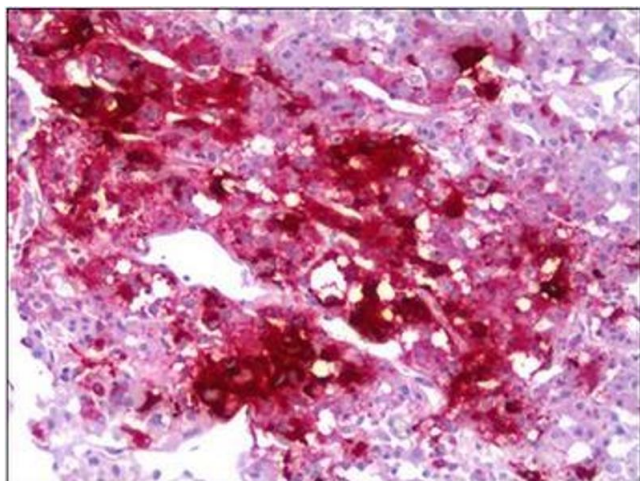
Buffer: PBS, pH 7.2

Handling Advice: Avoid repeated freezing and thawing.

Storage: 4 °C/-20 °C

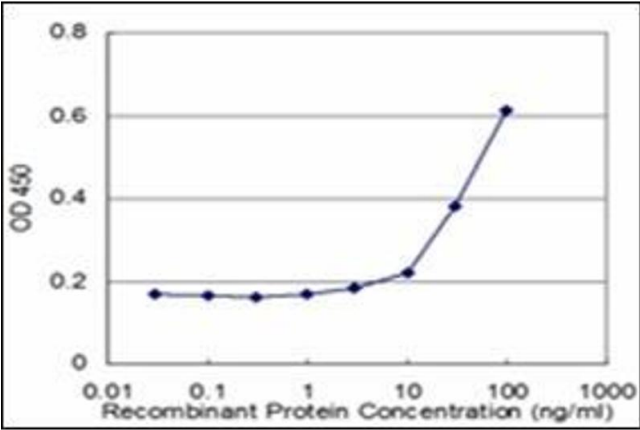
Storage Comment: Store the antibody undiluted at 2-8 °C for one month or (in aliquots) at -20 °C for longer.

Images



Immunohistochemistry

Image 1.



ELISA

Image 2.