

Datasheet for ABIN953685  
**anti-NPTN antibody (N-Term)**



[Go to Product page](#)

1 Image

## Overview

Quantity:	0.4 mL
Target:	NPTN
Binding Specificity:	AA 79-108, N-Term
Reactivity:	Human
Host:	Rabbit
Clonality:	Polyclonal
Conjugate:	This NPTN antibody is un-conjugated
Application:	Western Blotting (WB), Enzyme Immunoassay (EIA)

## Product Details

Immunogen:	KLH conjugated synthetic peptide between 79-108 amino acids from the N-terminal region of human NPTN
Isotype:	Ig Fraction
Specificity:	This antibody reacts to NPTN.
Cross-Reactivity (Details):	Species reactivity (tested):Human.
Purification:	Affinity chromatography on Protein A

## Target Details

Target:	NPTN
Alternative Name:	Neuroplastin / SDFR1 ( <a href="#">NPTN Products</a> )

## Target Details

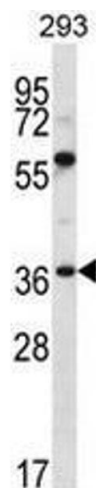
Background:	This gene encodes a type I transmembrane protein belonging to the Ig superfamily. The protein is believed to be involved in cell-cell interactions or cell-substrate interactions. Alternative splicing results in multiple transcript variants. [provided by RefSeq].Synonyms: NPTN, SDR-1, SDR1, Stromal cell-derived receptor 1
Molecular Weight:	44387 Da
Gene ID:	27020
NCBI Accession:	<a href="#">NP_001154835</a>
Pathways:	<a href="#">Regulation of long-term Neuronal Synaptic Plasticity</a>

## Application Details

Application Notes:	Optimal working dilution should be determined by the investigator.
Restrictions:	For Research Use only

## Handling

Format:	Liquid
Concentration:	0.25 mg/mL
Buffer:	PBS, 0.09 % (W/V) sodium azide
Preservative:	Sodium azide
Precaution of Use:	This product contains sodium azide: a POISONOUS AND HAZARDOUS SUBSTANCE which should be handled by trained staff only.
Handling Advice:	Avoid repeated freezing and thawing.
Storage:	4 °C/-20 °C
Storage Comment:	Store the antibody undiluted at 2-8 °C for one month or (in aliquots) at -20 °C for longer.



Western Blotting

**Image 1.** NPTN Antibody (N-term) western blot analysis in 293 cell line lysates (35µg/lane). This demonstrates the NPTN antibody detected the NPTN protein (arrow).